

**FCX DTM PACK**  
**Release 1.0.0.374**  
**INSTALLATION NOTE**

Summary

1. Introduction..... 2

2. Package installation..... 3

3. Using FCX-DTM with PACTware user interface ..... 4

    3.1. Checking DTM device drivers ..... 4

    3.2. Connecting a FCX pressure transmitter..... 5

## 1. Introduction

The FCX-DTM Package includes:

- One DTM supporting FCX-AII V4 (FCX-AII) and FCX-AII V5 (FCX-AIIS) HART 5 series of Fuji Electric pressure transmitters
- One DTM supporting FCX-AII VG (FCX-AIIS) and FCX-AIV HART 7 series of Fuji Electric pressure transmitters.

Notes:

- (1) A FDT user interface, such as PACTware, must be installed before using FCX-DTM package
- (2) A HART serial modem with its associated Windows driver and generic HART DTM must be installed before using the FCX-DTM package
- (3) FCX-DTM 1.0.0.374 release runs under the following operating system: Windows 7 SP1 (X86/x64) Windows 10 (x86, x64)
- (4) Installation of the latest version of Microsoft.NET Framework is recommended before using the FCX-DTM 1.0.0.374 release

**Fuji Electric France S.A.S.**

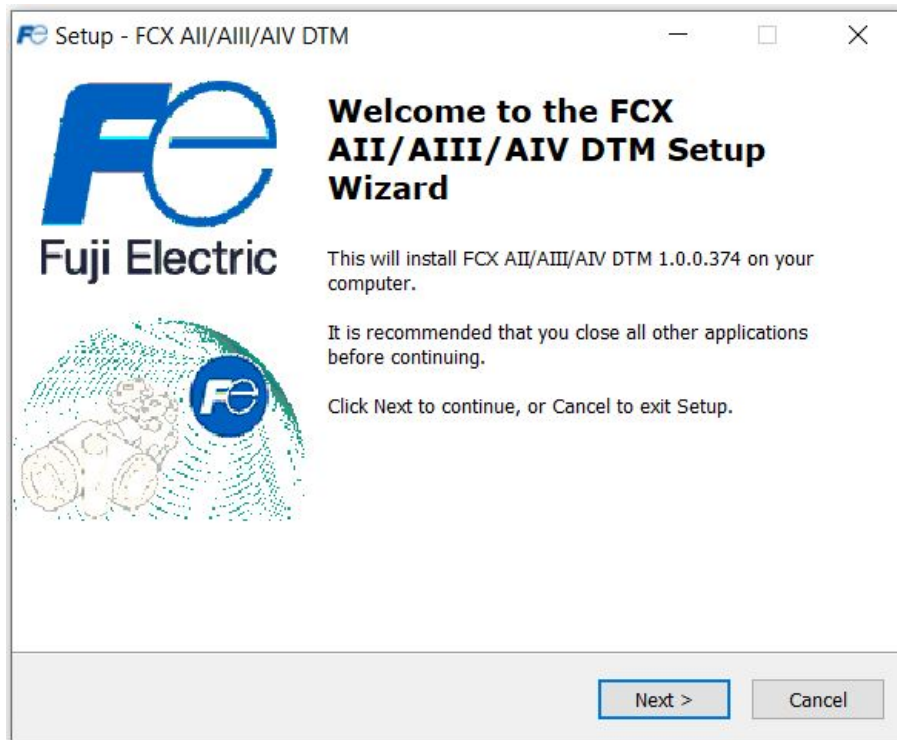
46, rue Georges Besse – ZI du Brézet - F- 63039 Clermont-Ferrand CEDEX 2 - FRANCE

Tél. : +33 (0)4 73 98 26 98 / Fax. : +33 (0)4 73 98 26 99 – Email : [sales.dpt@fujielectric.fr](mailto:sales.dpt@fujielectric.fr) – web : [www.fujielectric.fr](http://www.fujielectric.fr)

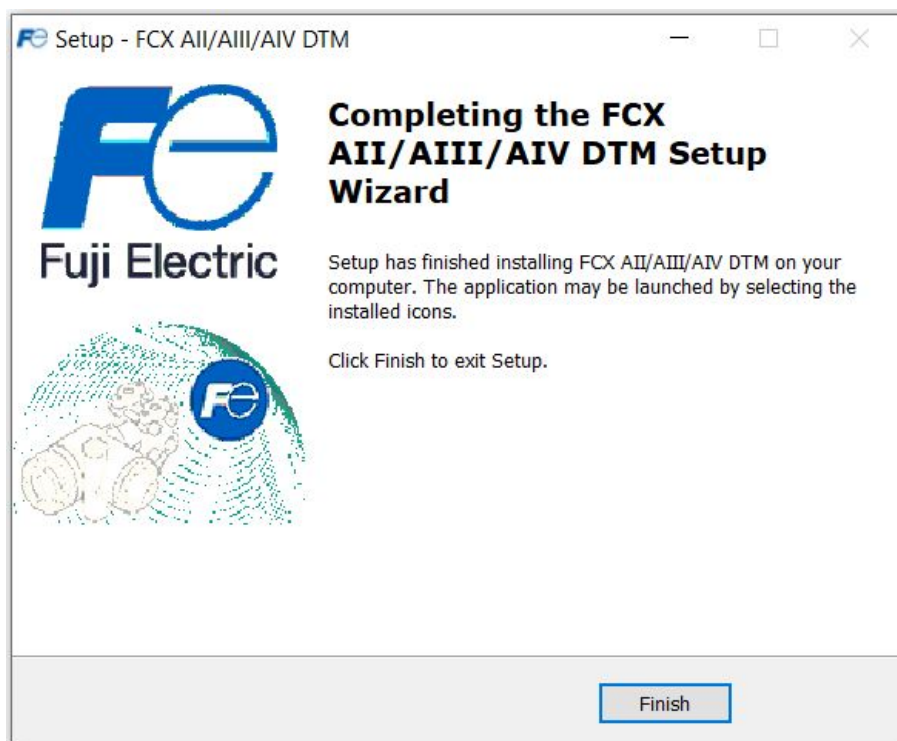
S.A.S. au capital de 4 573 000 € - RCS Clermont-Ferrand - Siret B 400 841 680 000 20 - NAF 2651 B

## 2. Package installation

Execute the *FCXDTM\_1.0.0.374.exe* file.



Select "Next"



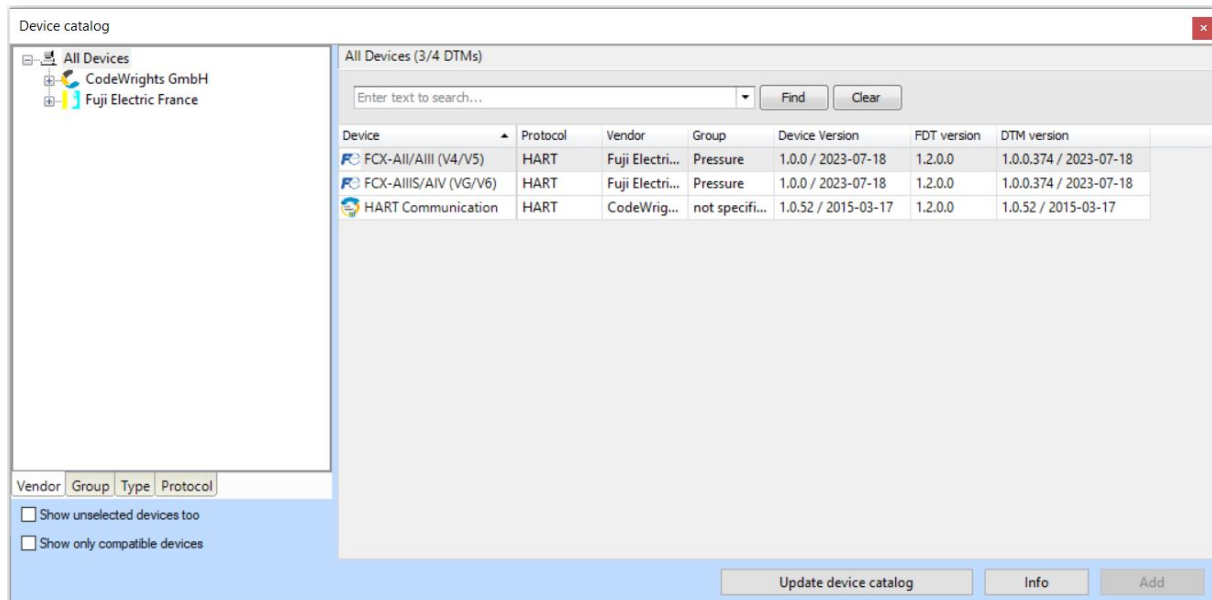
Then click "Finish" to exit setup.

### 3. Using FCX-DTM with PACTware user interface

When launching, PACTware should scan to find out new DTMs to be added into the device catalog.

#### 3.1. Checking DTM device drivers

Open the “View/Device catalog” menu or press F3 to display the DTM device driver catalog. The following “Device catalog” window is displayed:



In order to communicate with FCX series of pressure transmitters, the following DTMs must be listed:

- Device FCX-AII/AIII (V4/V5), DTM version = 1.0.0.374
- Device FCX-AIIIS/AIV (VG/V6), DTM version = 1.0.0.374
- Device HART Communication

If you cannot find these DTMs, click the “Update device catalog” button.

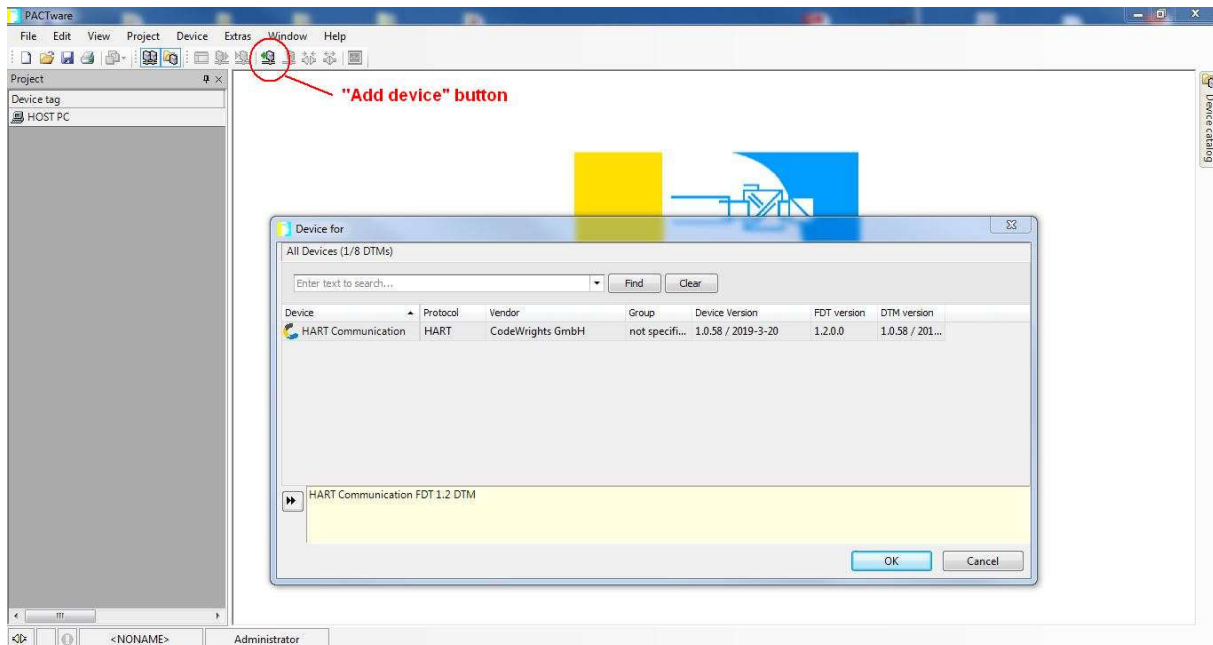
#### Fuji Electric France S.A.S.

46, rue Georges Besse – ZI du Brézet - F- 63039 Clermont-Ferrand CEDEX 2 - FRANCE  
Tél. : +33 (0)4 73 98 26 98 / Fax. : +33 (0)4 73 98 26 99 – Email : [sales.dpt@fujielectric.fr](mailto:sales.dpt@fujielectric.fr) – web : [www.fujielectric.fr](http://www.fujielectric.fr)  
S.A.S. au capital de 4 573 000 € - RCS Clermont-Ferrand - Siret B 400 841 680 000 20 - NAF 2651 B

### 3.2. Connecting a FCX pressure transmitter

The first step is to create the HART communication link that establishes the physical connection between the PACTware interface and your HART modem.

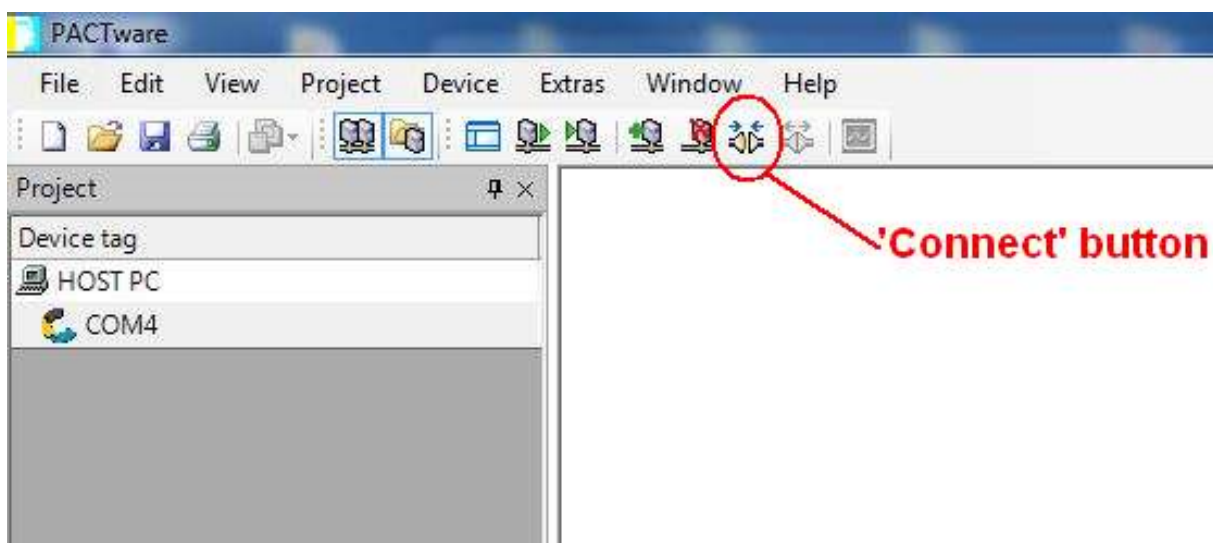
Open the “Device/Add device” menu or click the “Add device” button to open the following “Device for” window:



Select the HART communication device and click the “OK” button

The following picture shows the HART communication added on the Project window. In this example, the HART modem driver uses the virtual serial communication port COM4.

The next step is to physically connect the HART communication device to the PACTware interface by opening the “Device/Connect” menu or clicking the “Connect” button.



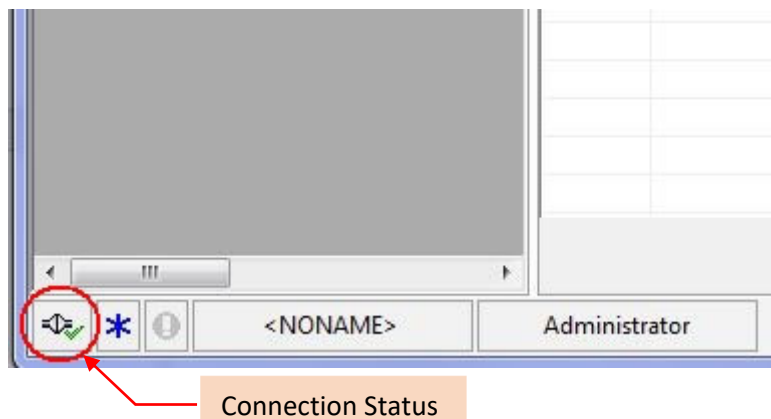
**Fuji Electric France S.A.S.**

46, rue Georges Besse – ZI du Brézet - F- 63039 Clermont-Ferrand CEDEX 2 - FRANCE

Tél. : +33 (0)4 73 98 26 98 / Fax. : +33 (0)4 73 98 26 99 – Email : [sales.dpt@fujielctric.fr](mailto:sales.dpt@fujielctric.fr) – web : [www.fujielctric.fr](http://www.fujielctric.fr)

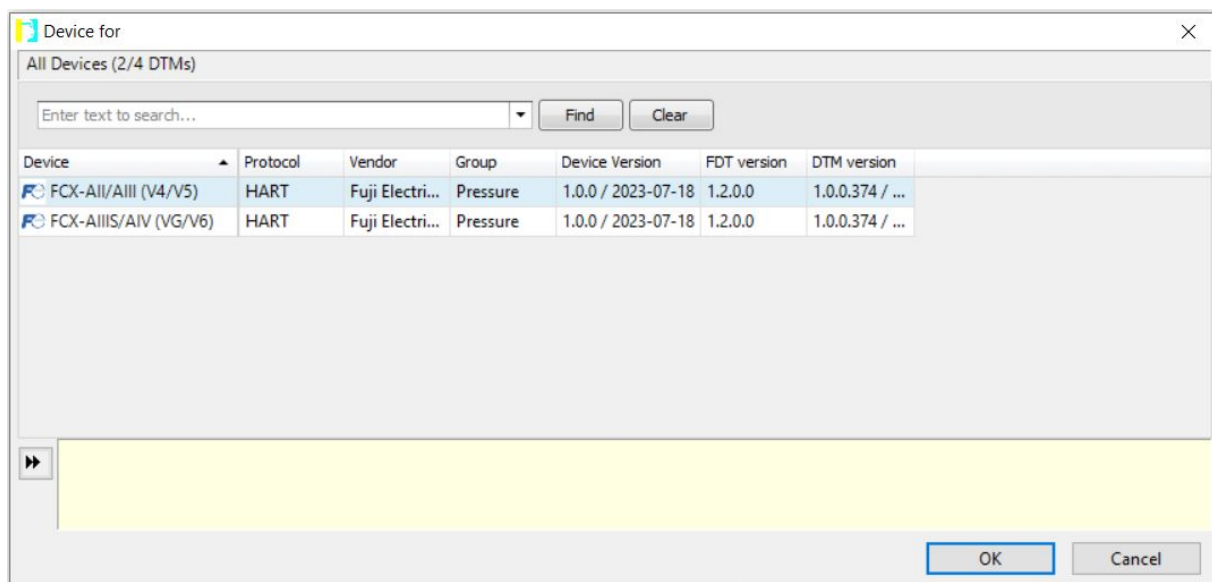
S.A.S. au capital de 4 573 000 € - RCS Clermont-Ferrand - Siret B 400 841 680 000 20 - NAF 2651 B

The connection status is displayed on the bottom left of the main PACTware window.



The FCX DTM can be now added using the same way.

Select the HART communication device (COM4) and open the “*Device/Add*” device menu or click the “*Add device*” button to open the following “*Device for*” window:



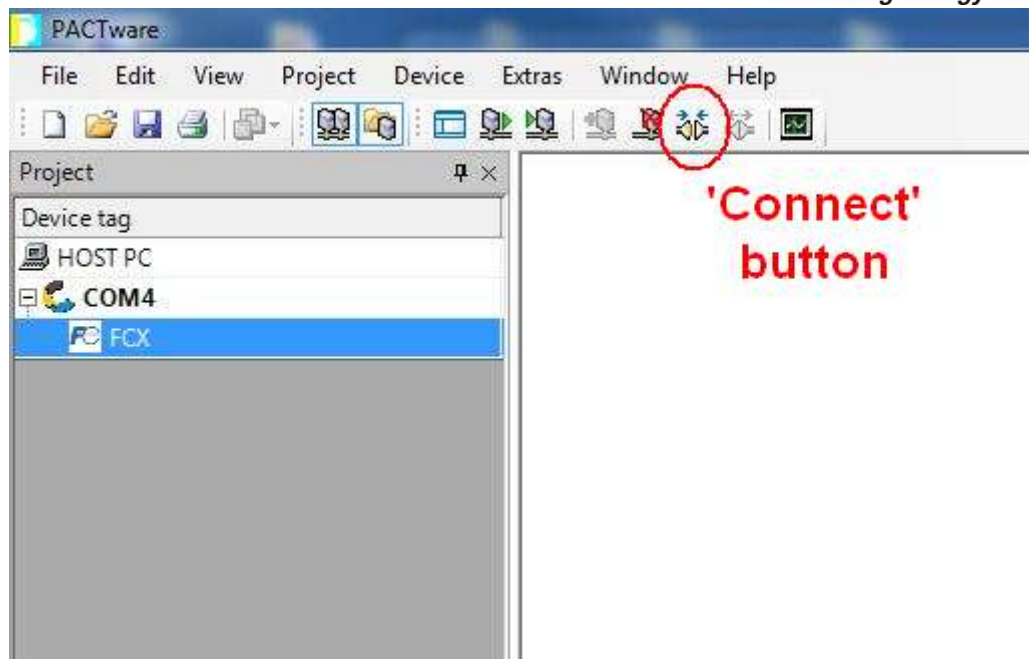
Depending the targeted FCX pressure transmitter, select either the “*FCX-AII/AIII (V4/V5)*” or “*FCX-AIIIS/AIV (VG/V6)*” DTM and click the “*OK*” button.

The picture below shows the FCX device driver added hierarchically below the HART communication device.

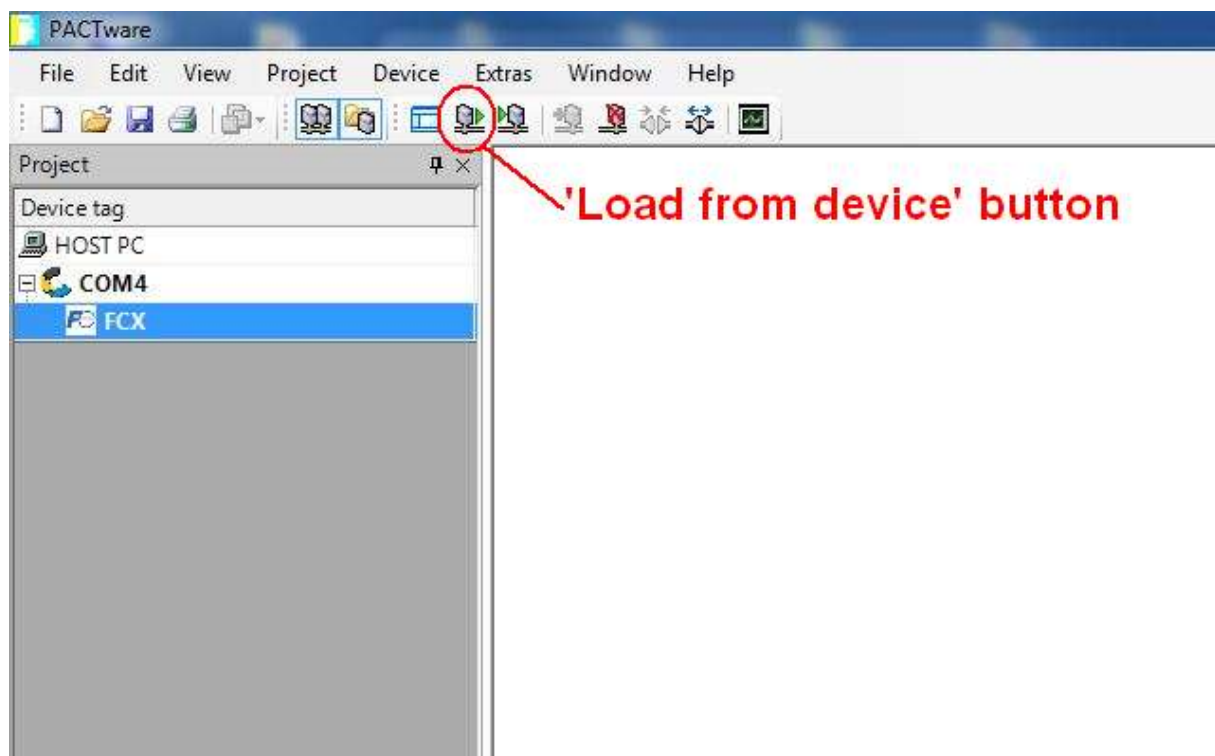
To physically connect the FCX device driver to the HART communication device, select the FCX device and open the “*Device/Connect*” menu or click the “*Connect*” button.

**Fuji Electric France S.A.S.**

46, rue Georges Besse – ZI du Brézet - F- 63039 Clermont-Ferrand CEDEX 2 - FRANCE  
Tél. : +33 (0)4 73 98 26 98 / Fax. : +33 (0)4 73 98 26 99 – Email : [sales.dpt@fujielectric.fr](mailto:sales.dpt@fujielectric.fr) – web : [www.fujielectric.fr](http://www.fujielectric.fr)  
S.A.S. au capital de 4 573 000 € - RCS Clermont-Ferrand - Siret B 400 841 680 000 20 - NAF 2651 B



If a FCX pressure transmitter is powered on and connected to the HART communication link, you can now upload all the transmitter data by opening the “*Device/Load from device*” menu or clicking the “*Load from device*” button.

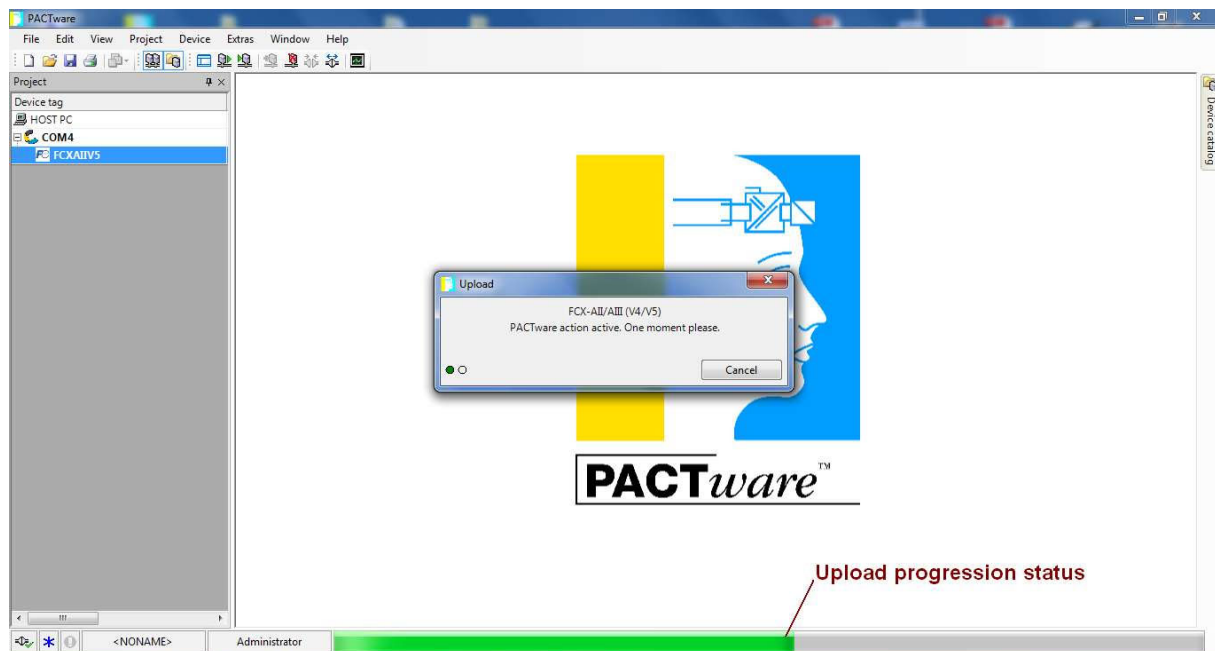


**Fuji Electric France S.A.S.**

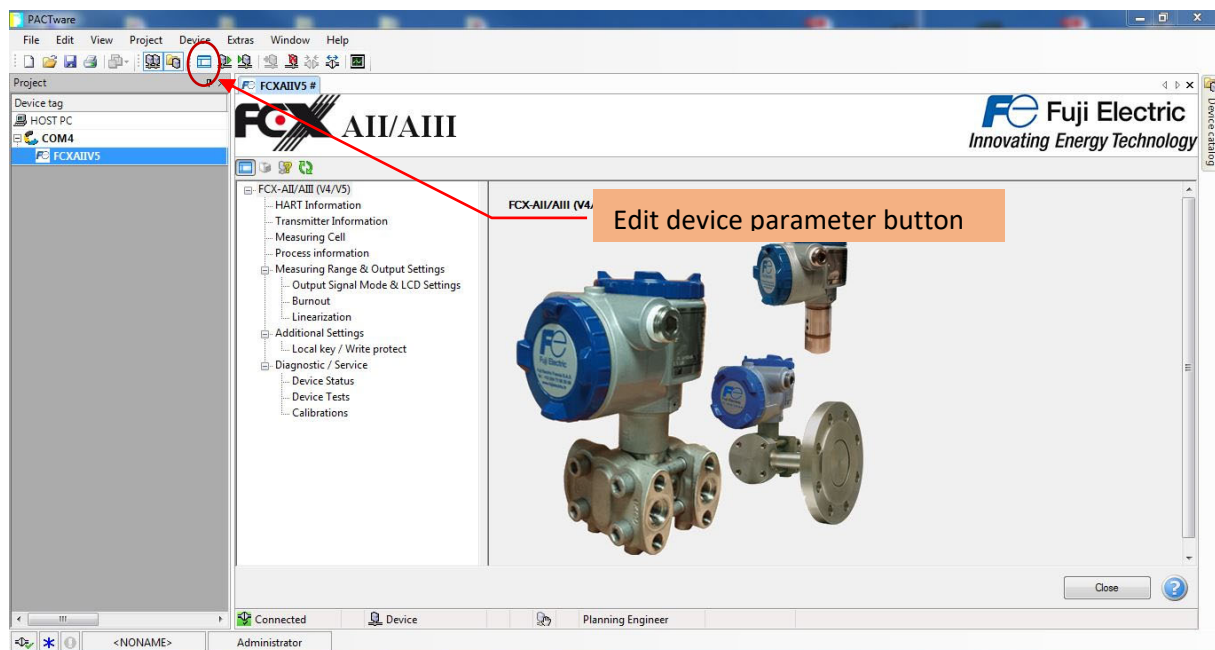
46, rue Georges Besse – ZI du Brézet - F- 63039 Clermont-Ferrand CEDEX 2 - FRANCE  
Tél. : +33 (0)4 73 98 26 98 / Fax. : +33 (0)4 73 98 26 99 – Email : [sales.dpt@fujielectric.fr](mailto:sales.dpt@fujielectric.fr) – web : [www.fujielectric.fr](http://www.fujielectric.fr)  
S.A.S. au capital de 4 573 000 € - RCS Clermont-Ferrand - Siret B 400 841 680 000 20 - NAF 2651 B



The picture below shows the retrieving of parameters and the associated progression status bar.



Transmitter parameters can be now displayed by opening the “Device/Parameter/Online parameterization” menu or clicking the “Edit device parameter” button as shown in the picture below



**Fuji Electric France S.A.S.**

46, rue Georges Besse – ZI du Brézet - F- 63039 Clermont-Ferrand CEDEX 2 - FRANCE

Tél. : +33 (0)4 73 98 26 98 / Fax. : +33 (0)4 73 98 26 99 – Email : [sales.dpt@fujielectric.fr](mailto:sales.dpt@fujielectric.fr) – web : [www.fujielectric.fr](http://www.fujielectric.fr)

S.A.S. au capital de 4 573 000 € - RCS Clermont-Ferrand - Siret B 400 841 680 000 20 - NAF 2651 B