



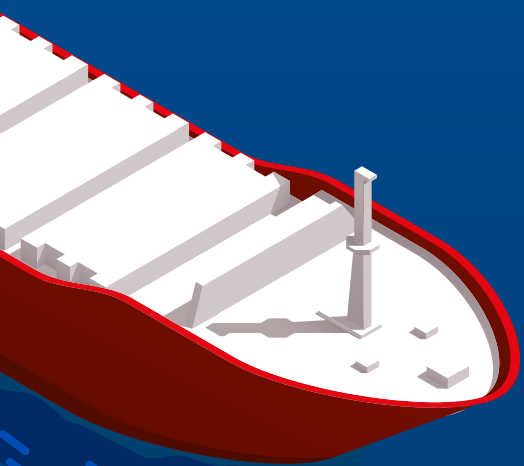
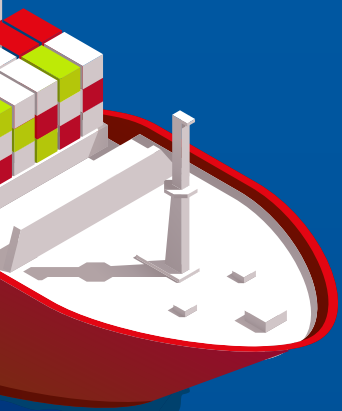
Can traditional
CEMS resist
to on **board marine**
conditions ?

Clearly, not !

First of all, **Marine**

CEMS must

resist to **harsh**
conditions.



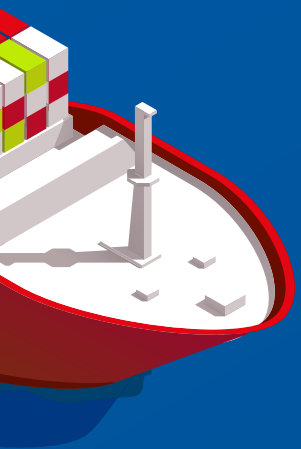


1

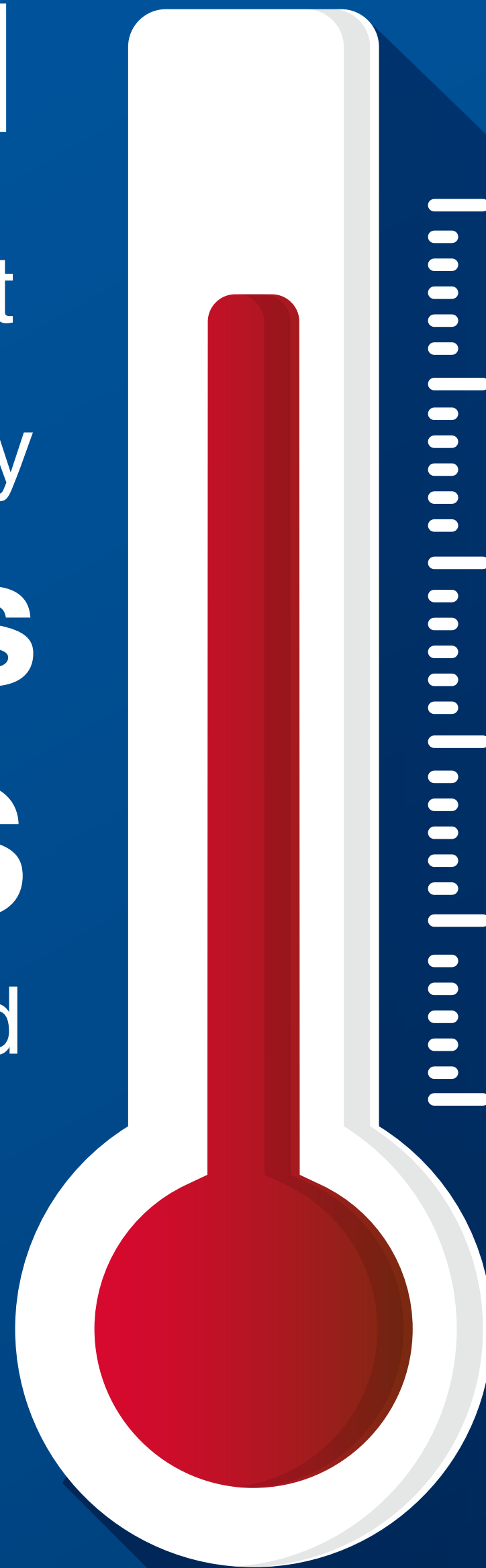
Using **corrosion resistant**
materials



Adapted
to **high** ambient
temperature and very
hot flue gas
when **EGCS**
is stopped



2





Shocks and
vibrations
resistant

3



Moreover, the

Sampling System

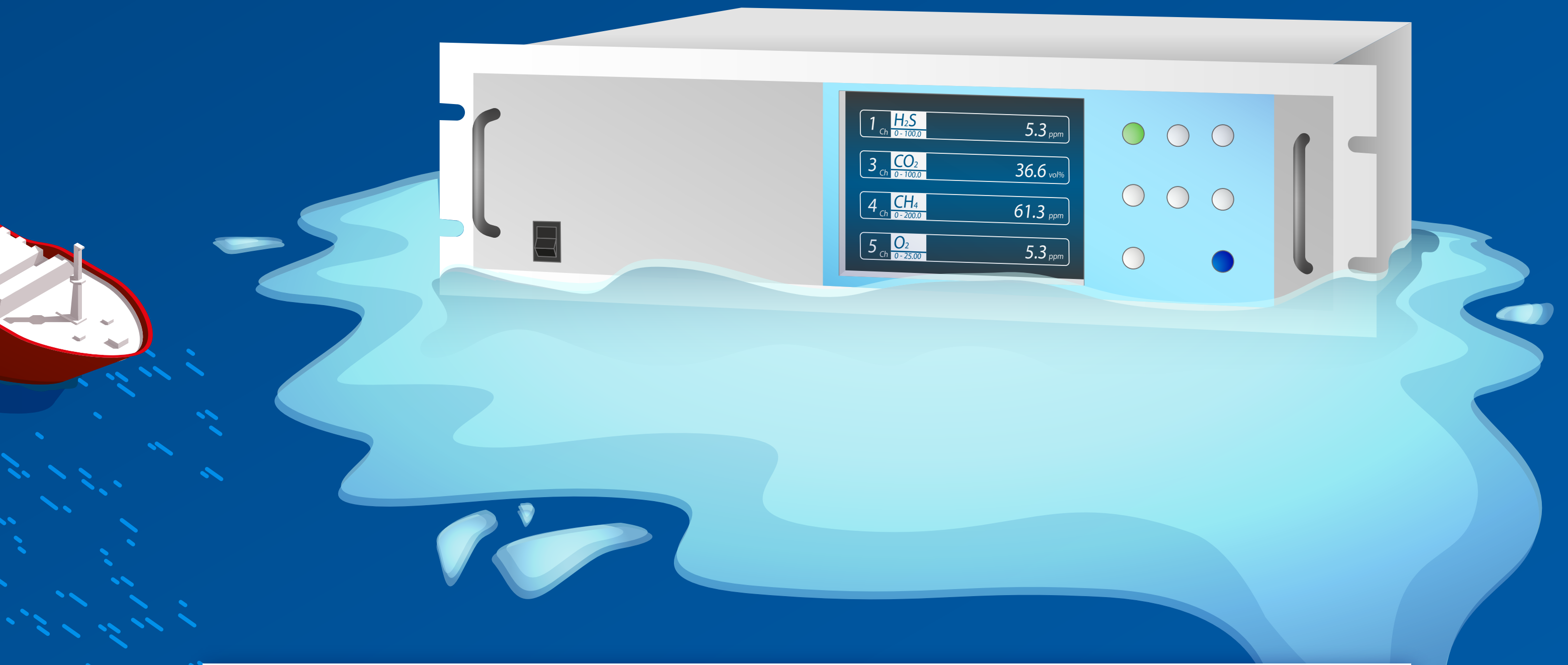
requires **specific**

technologies

to **avoid :**

**clogging with
soots and salts**





**"flooded" analyser with
water saturated fumes
downstream EGCS**

Think maintanability:

How to make gas analyser calibration easy on board ?



Think compliance

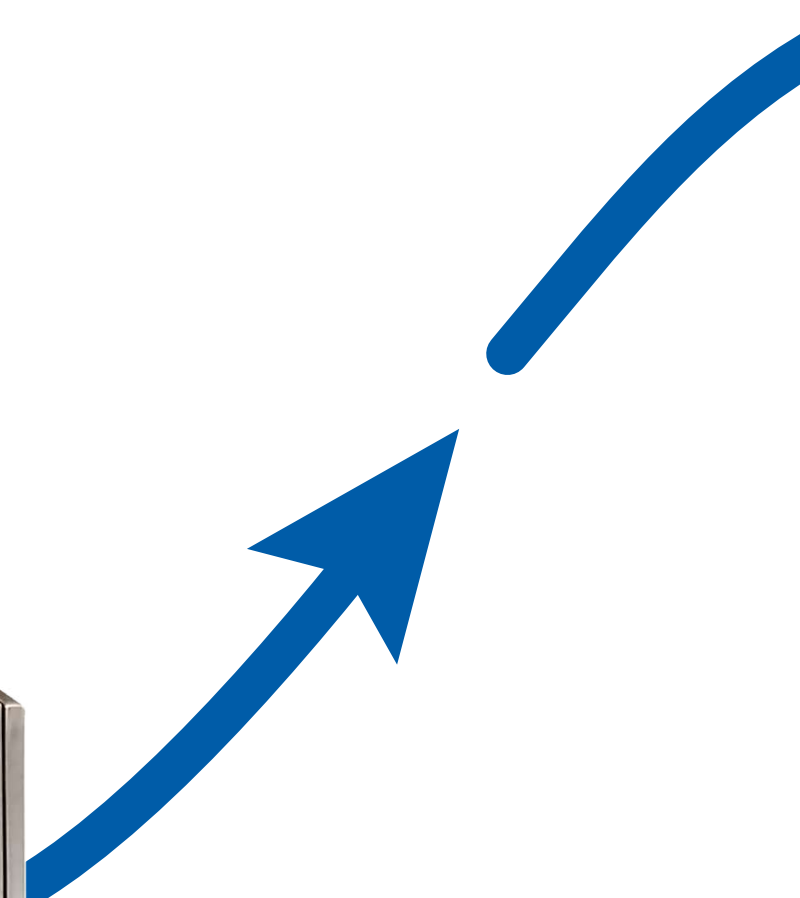
Comply with IMO Directives and
avoid EGCS downtime with
continuous SO₂ / CO₂ measurements
even in harsh conditions

IMO Directives

- ✓ _____
- ✓ _____
- ✓ _____

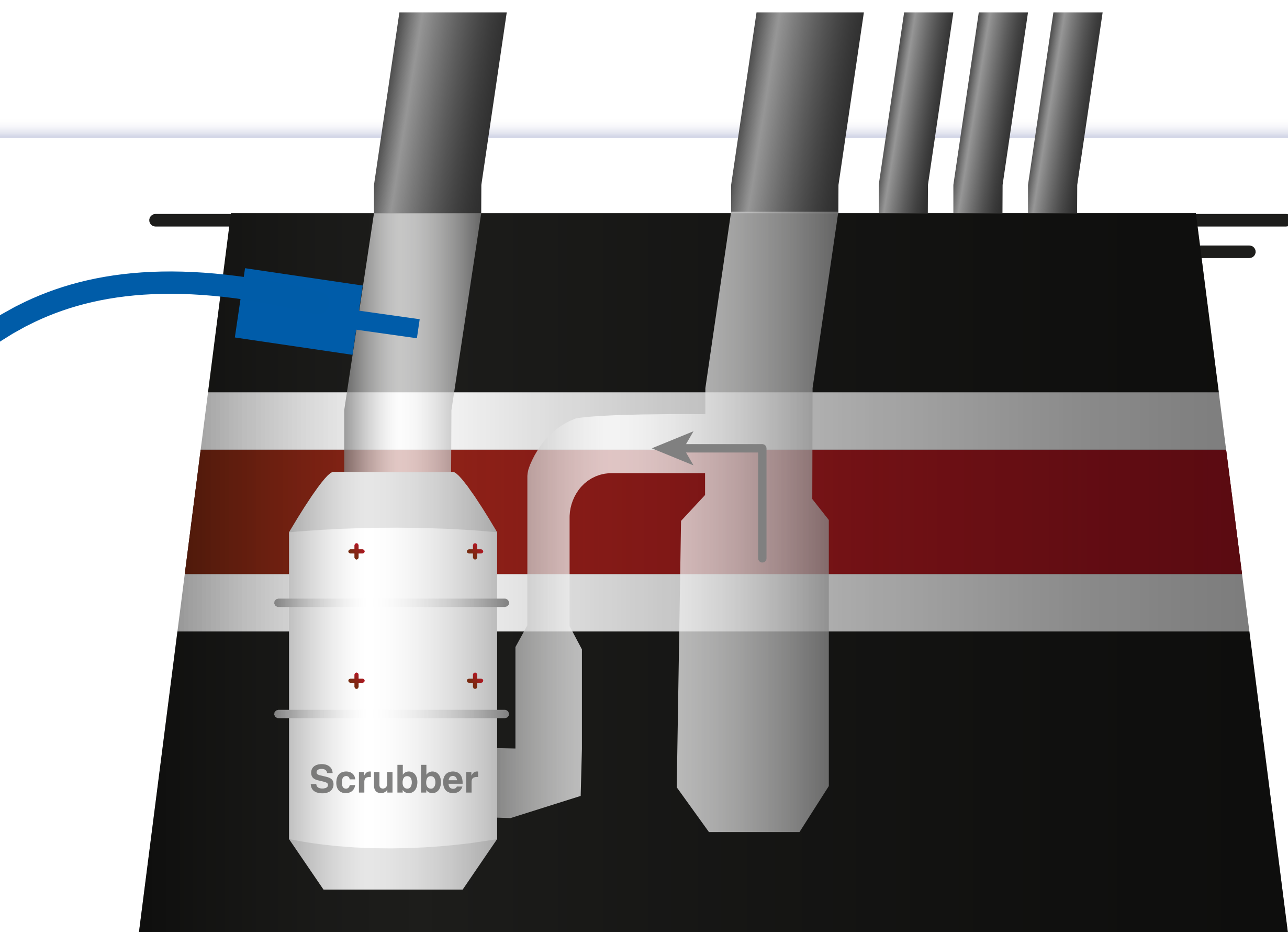


S-Keeper 7™



Think scalability

Get ready for tomorrow's regulation
and report NOx and Dusts emissions



Fuji Electric

S-Keeper 7™

compact marine CEMS

- ① **Specific**
marine design
- ② **Easy** installation,
operation, maintenance
- ③ **Automatic**
calibration
- ④ **Ship efficiency**
optimisation



➤ **Learn more**

about this **solution**
directly on our web site:

www.fujielectric.fr



Fuji Electric

#CreateEnergyTogether