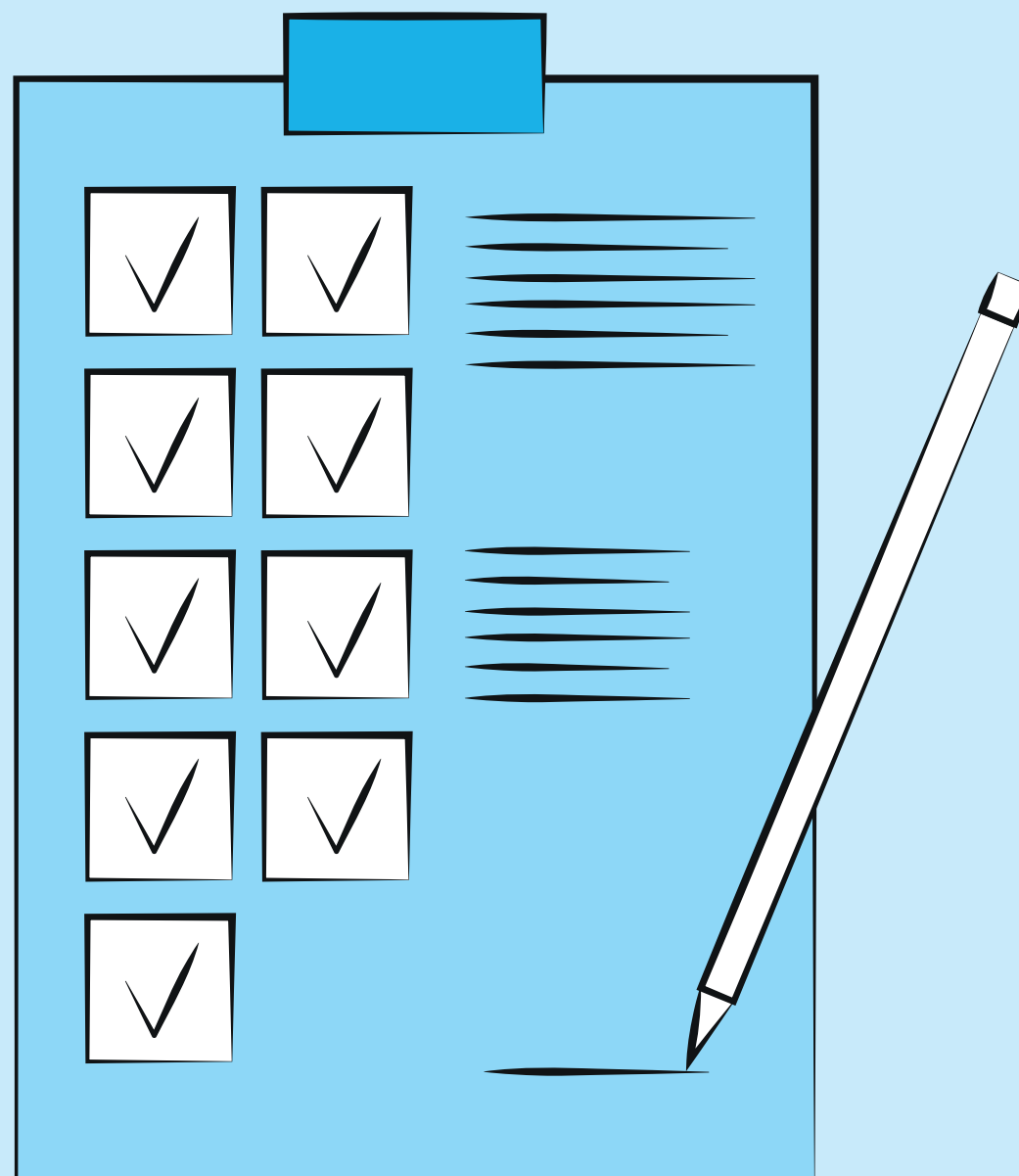


9 essential questions

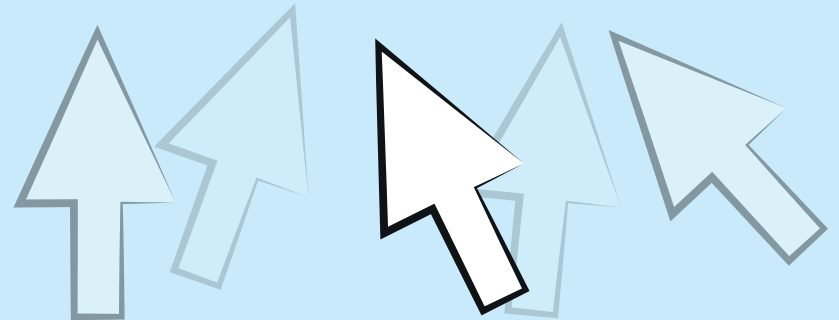
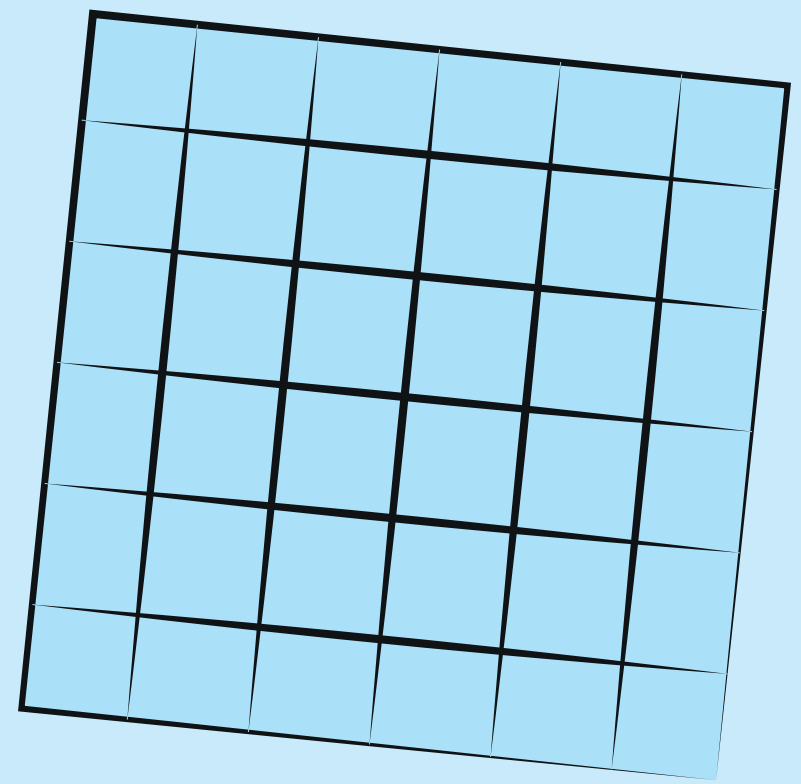
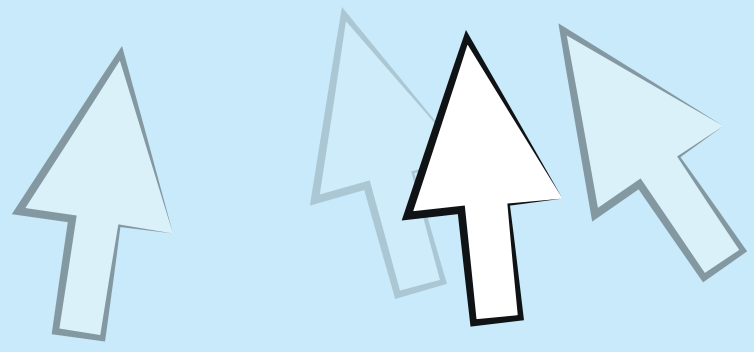
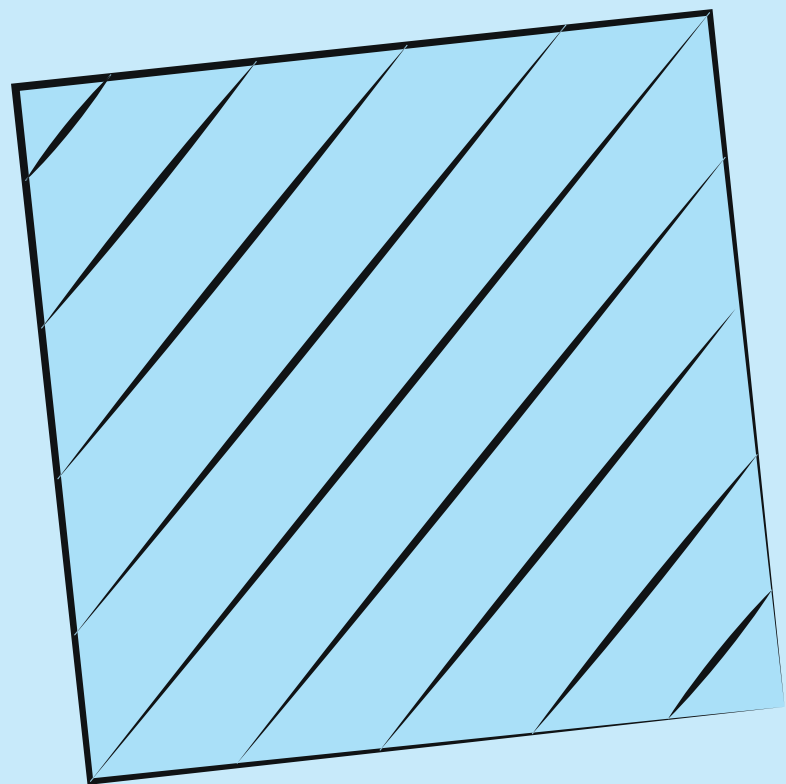
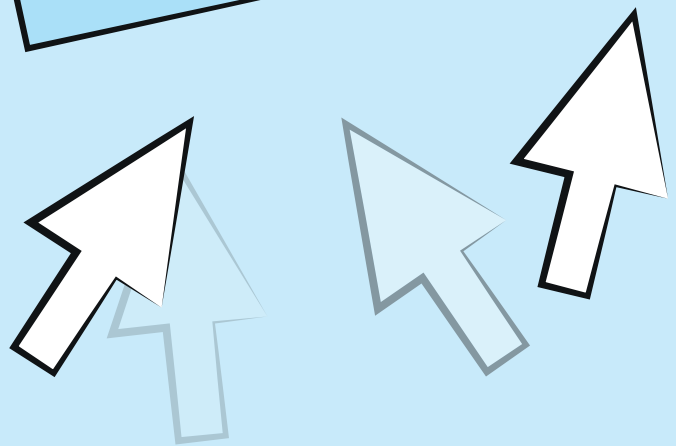
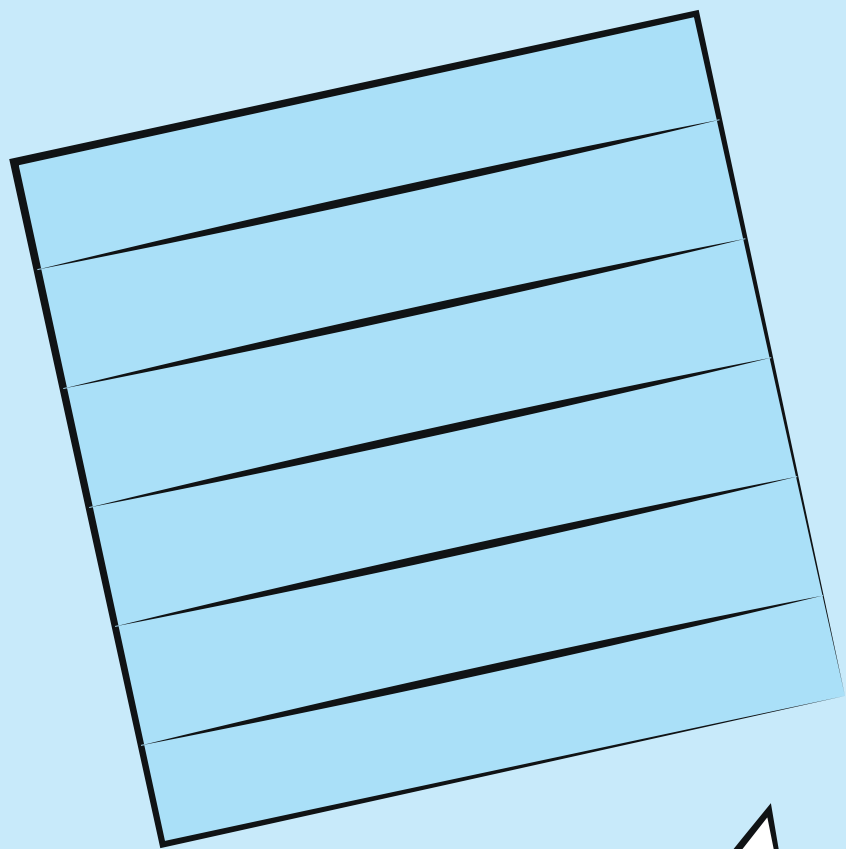
**to choose an industrial
pressure transmitter**

Choosing the right pressure transmitter for your application is not always easy

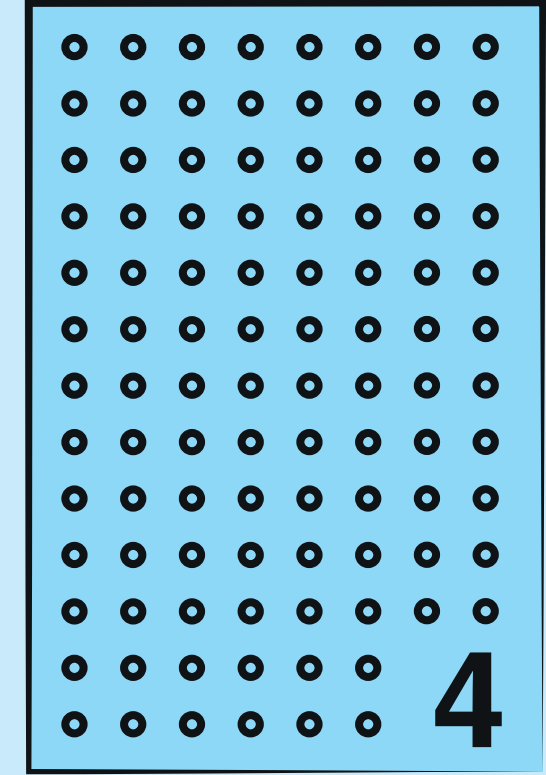
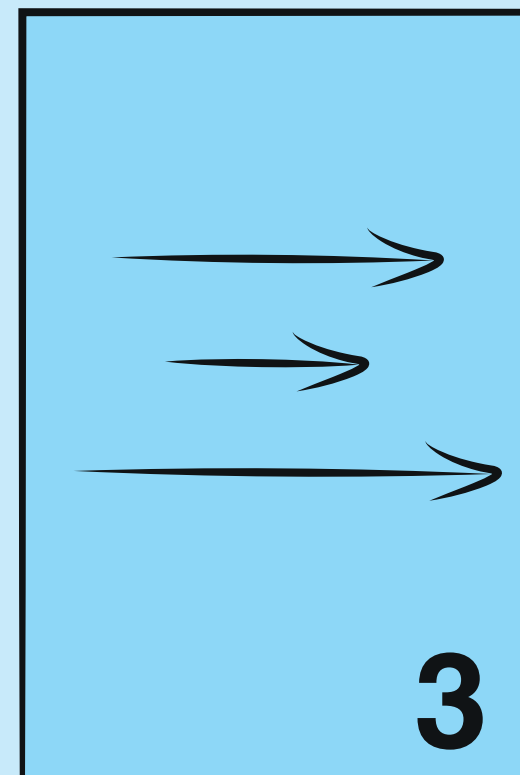
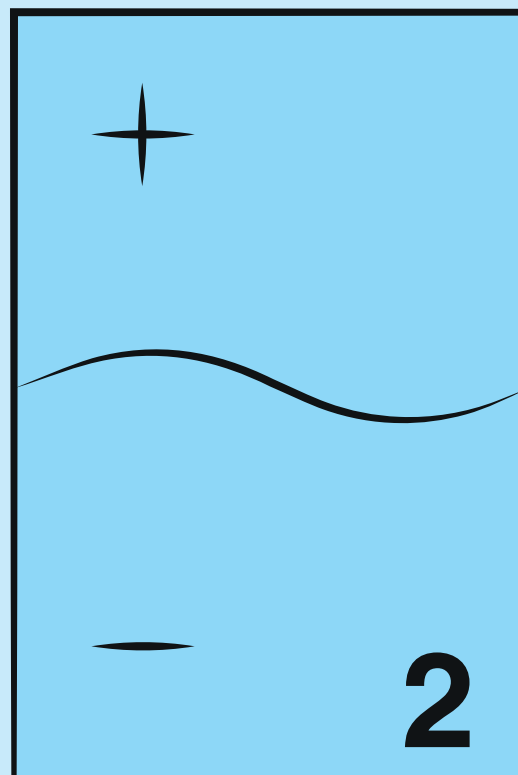
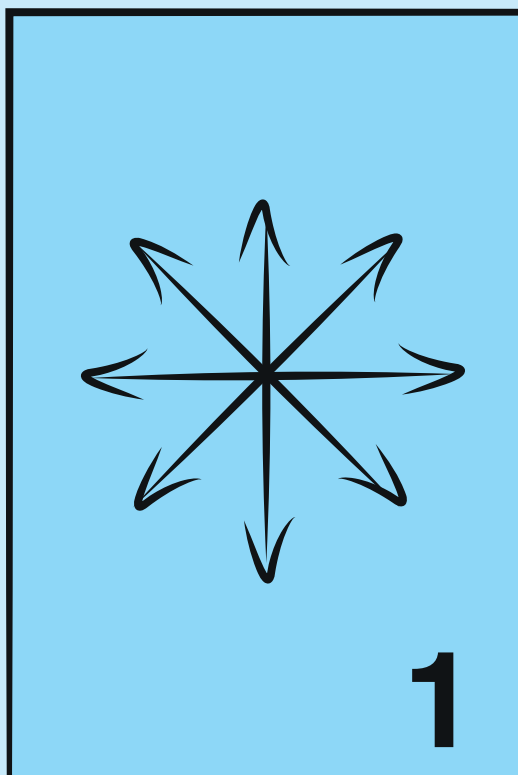


Let's clarify

your needs



What type of measurement?

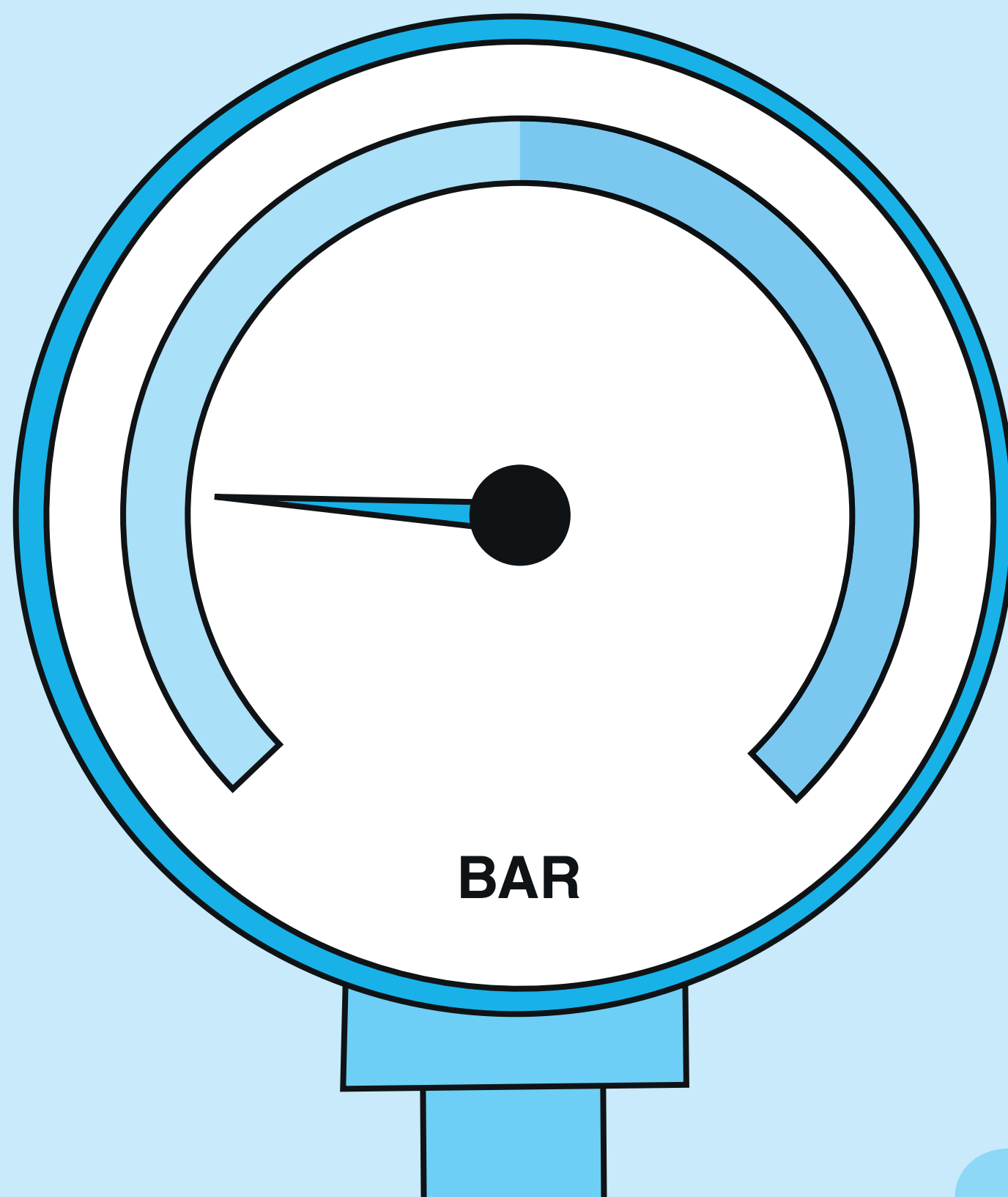


- 1 - Pressure
- 2 - Hydrostatic level
- 3 - Flow rate by differential pressure and primary element
- 4 - Density

N°2

**What type of pressure
do I want to measure?**

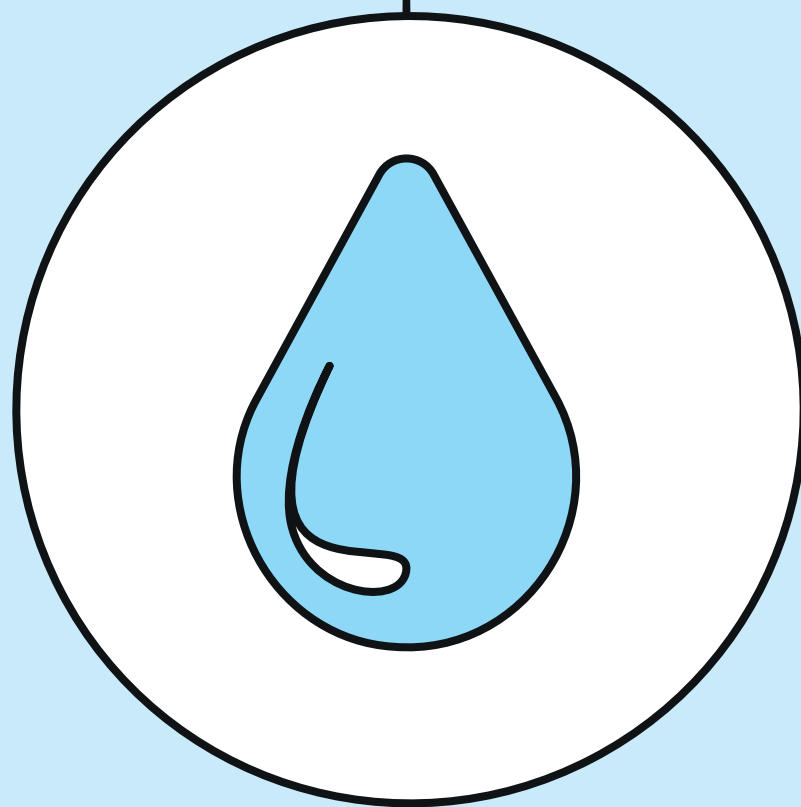
Differential / Relative / Absolute / Vacuum



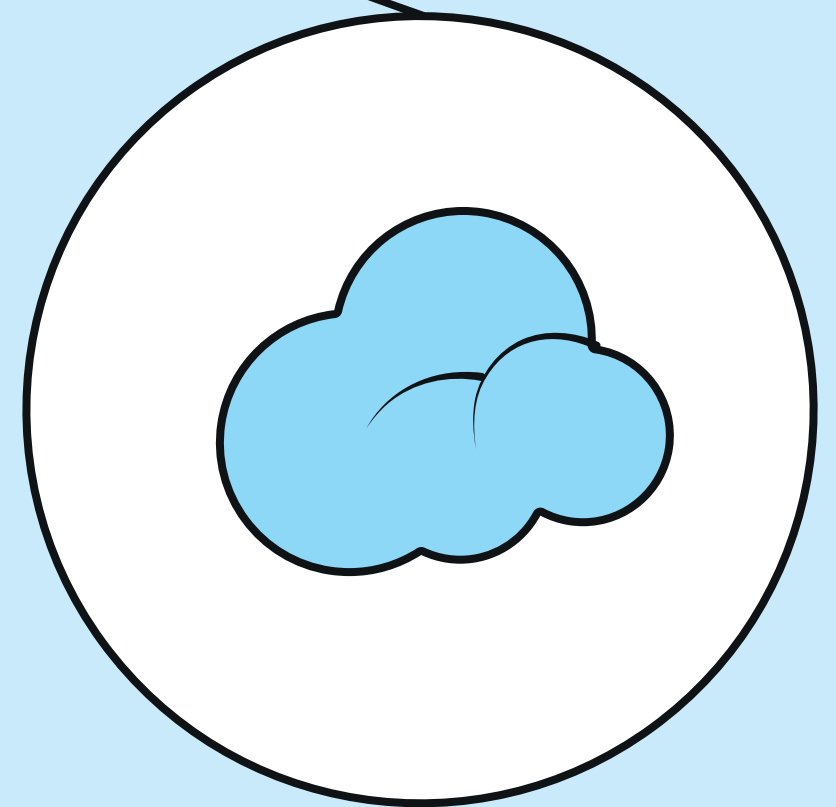
What is the nature of the fluid?



Gas



Liquid

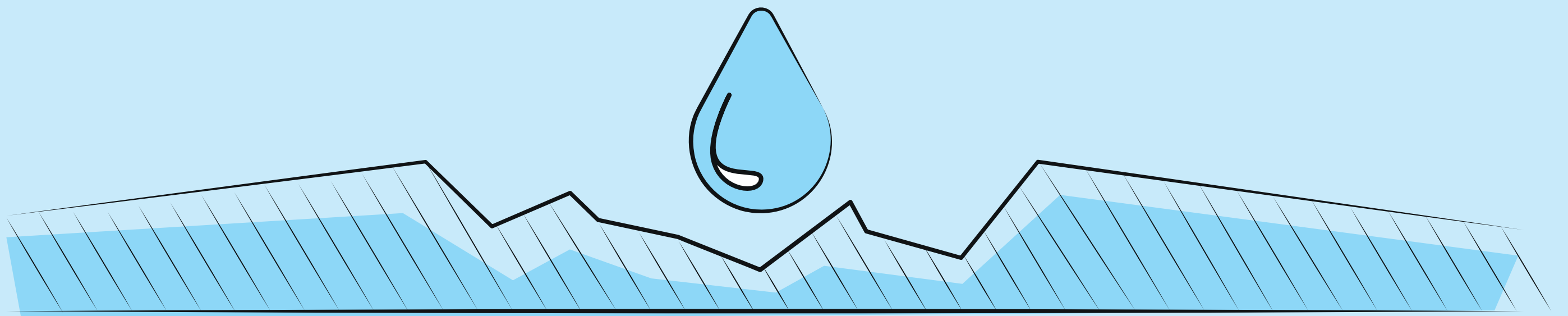


Steam

N°4

How corrosive is the fluid?

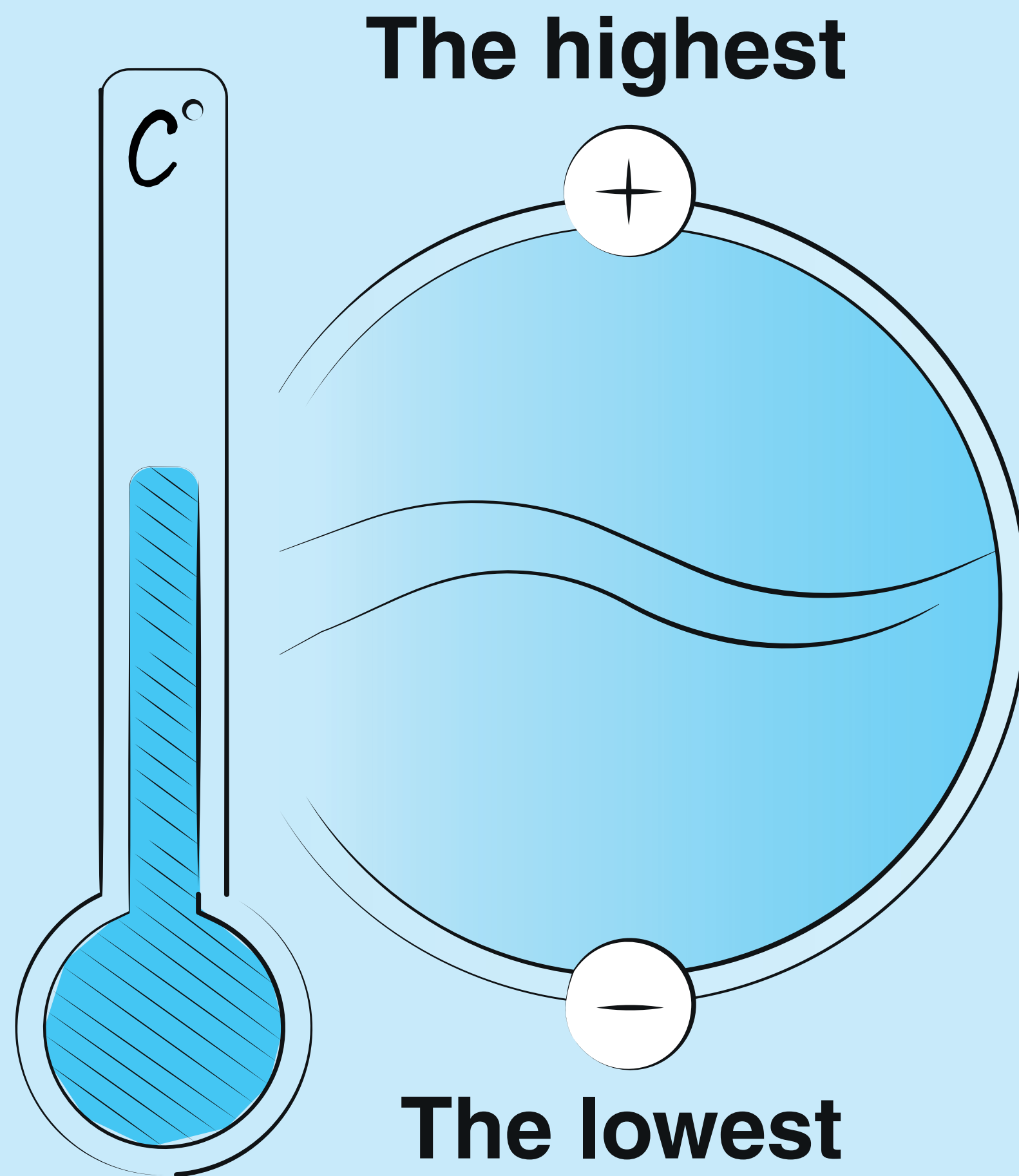
Contaminated / Chemically aggressive



**The fluid corrosivity drives the choice
of materials for the wetted parts**

N°5

What is the temperature of the fluid?

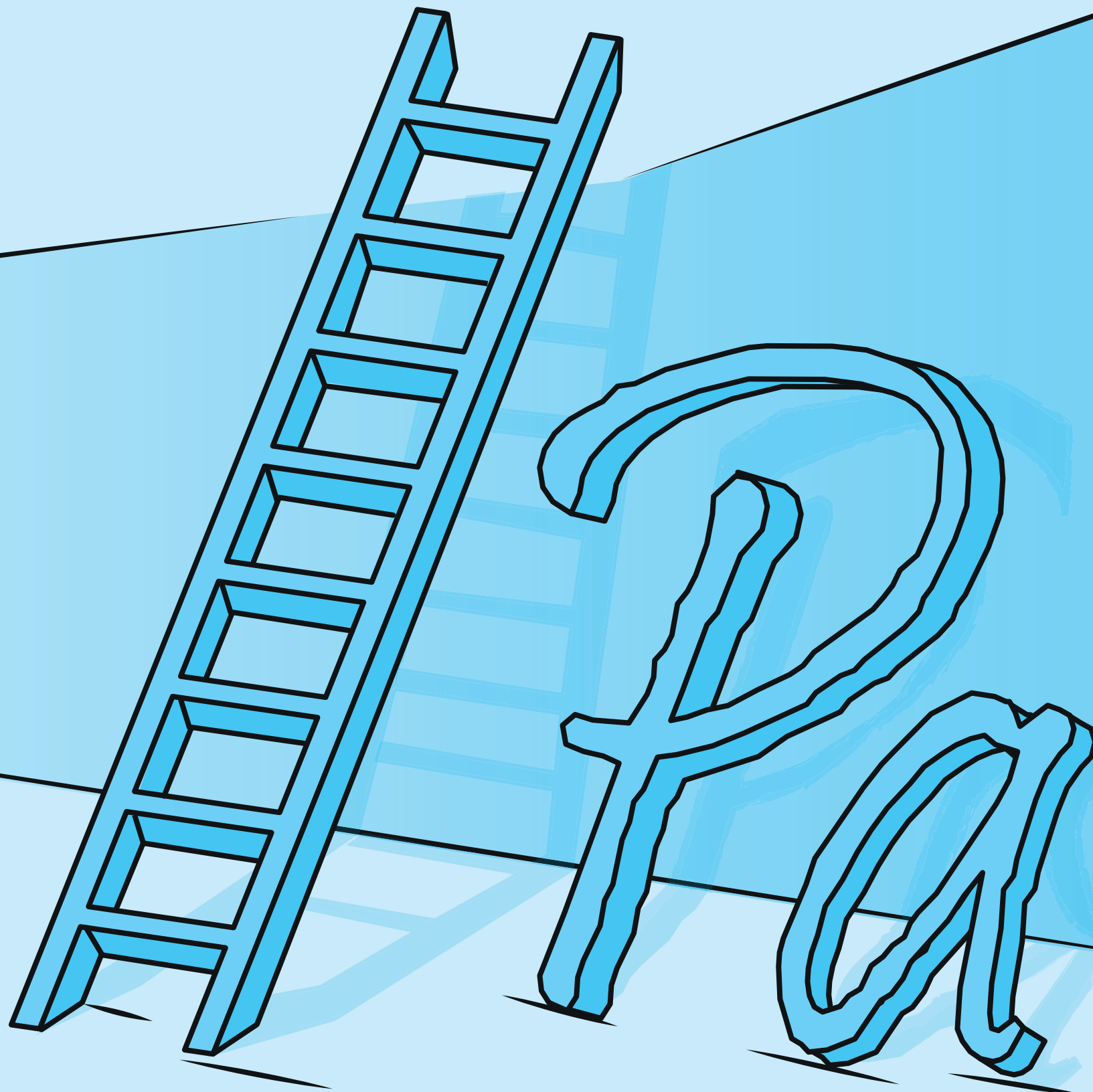


What is measuring range?

Minimum / Maximum

500 bar

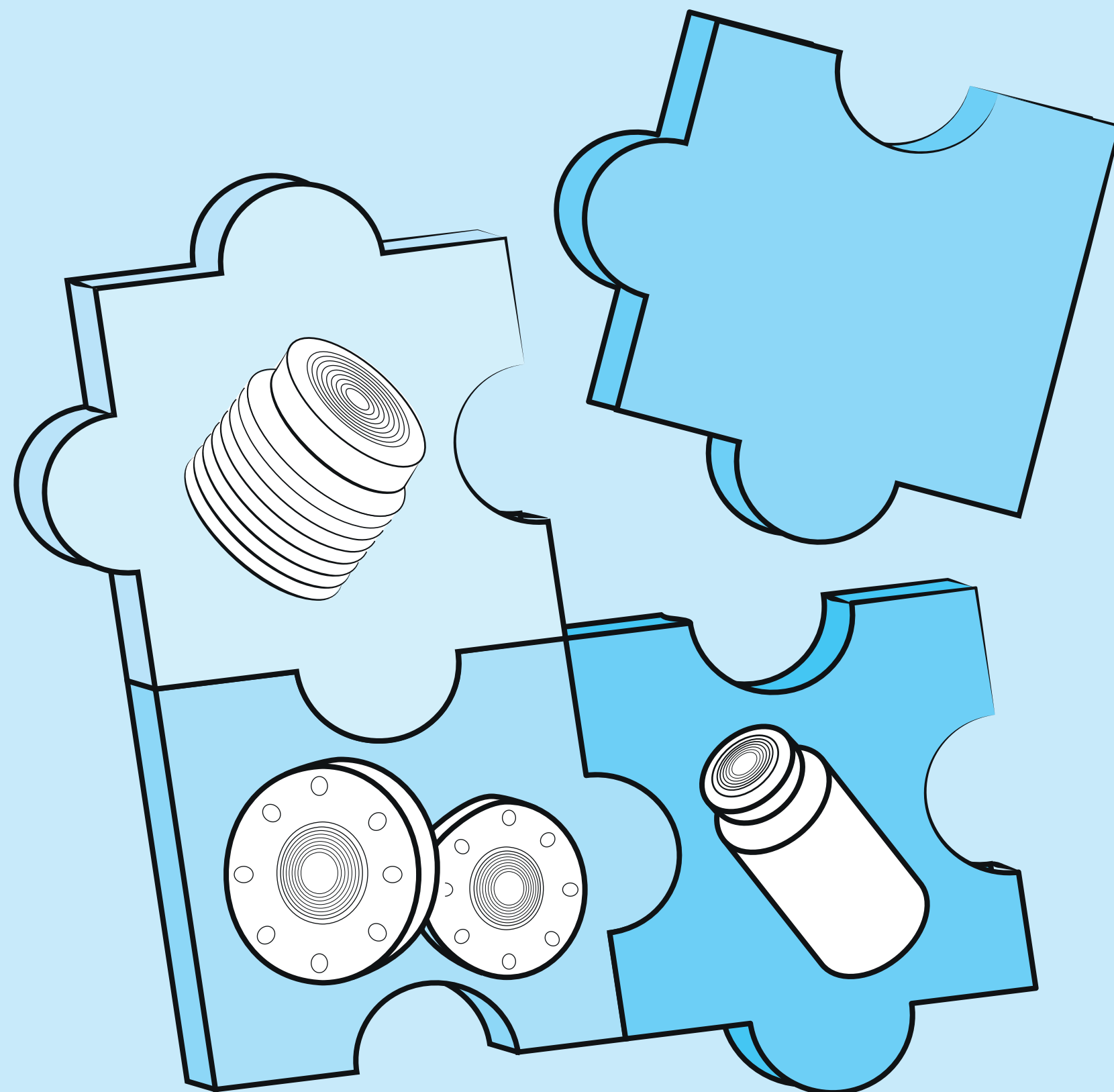
0 bar



N°7

How to connect to the process?

Screwed / Flanged / Hygienic



What are the environmental conditions?

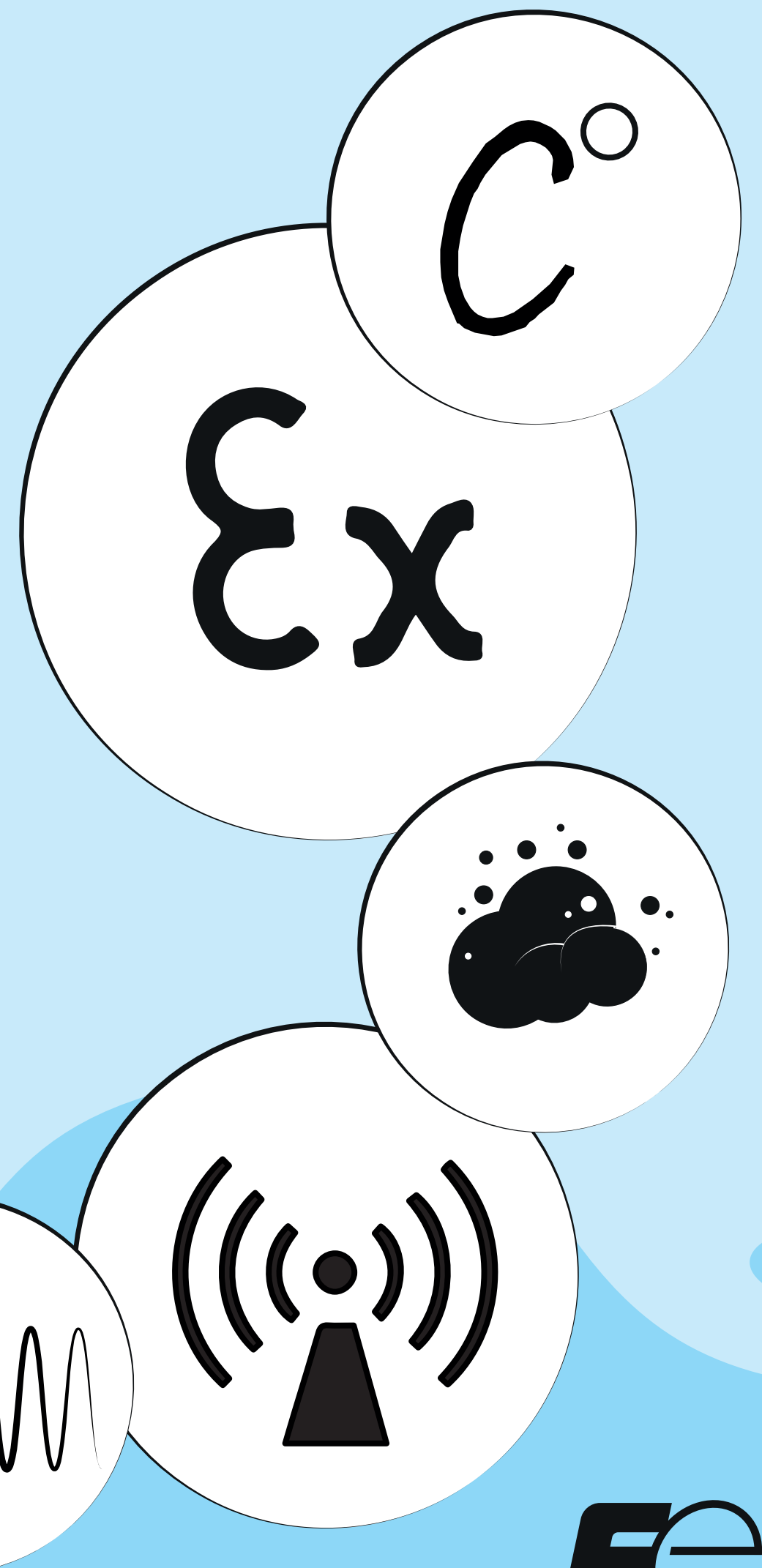
Temperature and humidity

Explosive atmosphere

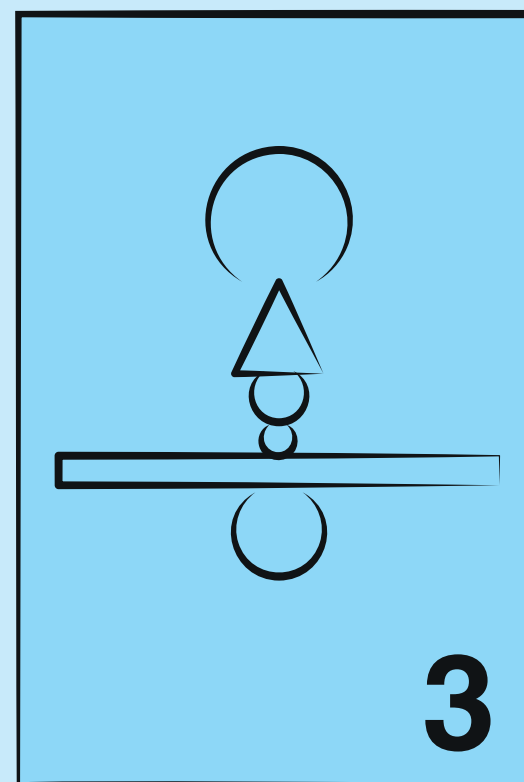
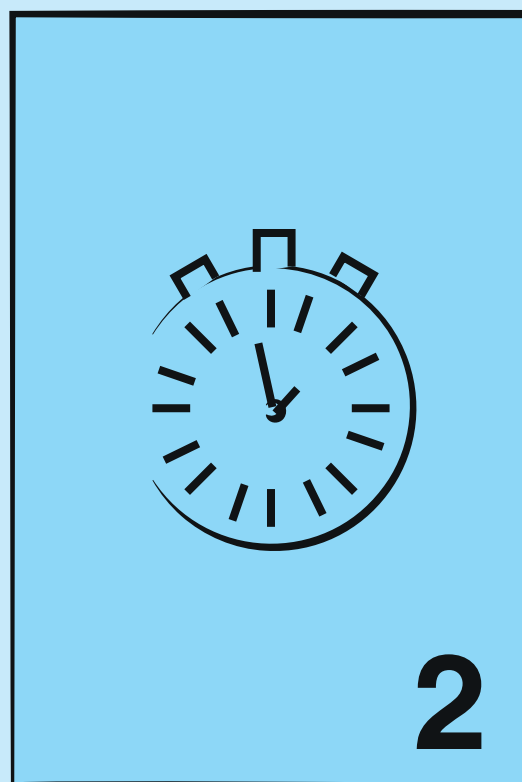
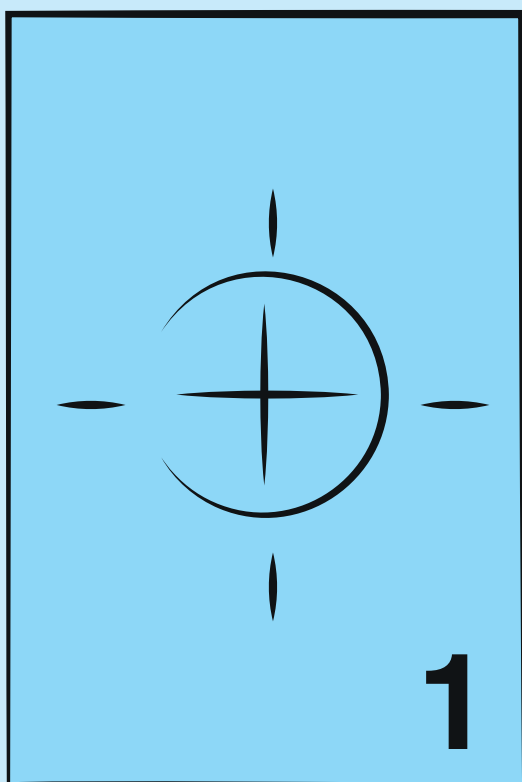
Dusts

Electromagnetic waves

Vibrations



What are the main requirements for my application?



- 1 - Accuracy
- 2 - Response time
- 3 - Stability
- 4 - Safety Integrity Level (SIL)

Choose the Fuji Electric pressure transmitter

that meets all your requirements!



**FABRIQUÉ
EN FRANCE**



**Still have
doubts?**



Contact us and relax,

**we will select
the right instrument and
#CreateEnergyTogether**

www.fujielectric.fr



Fuji Electric