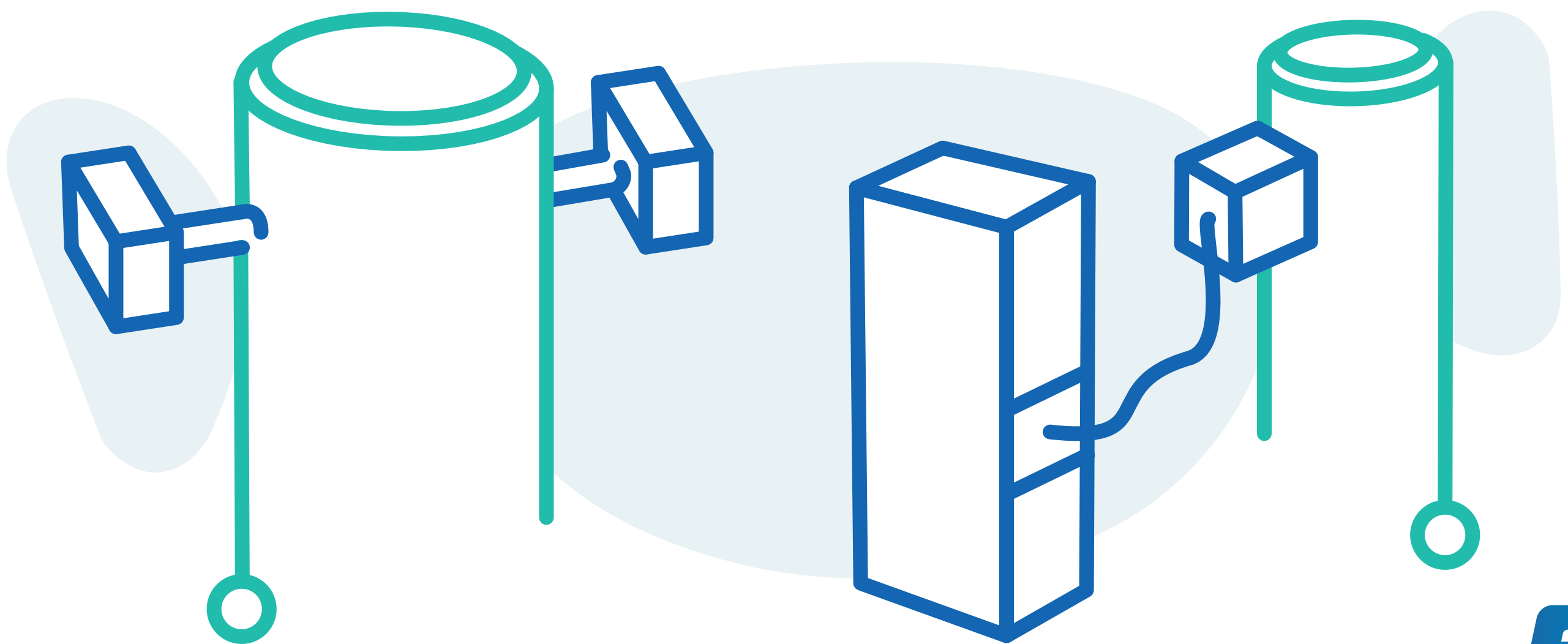
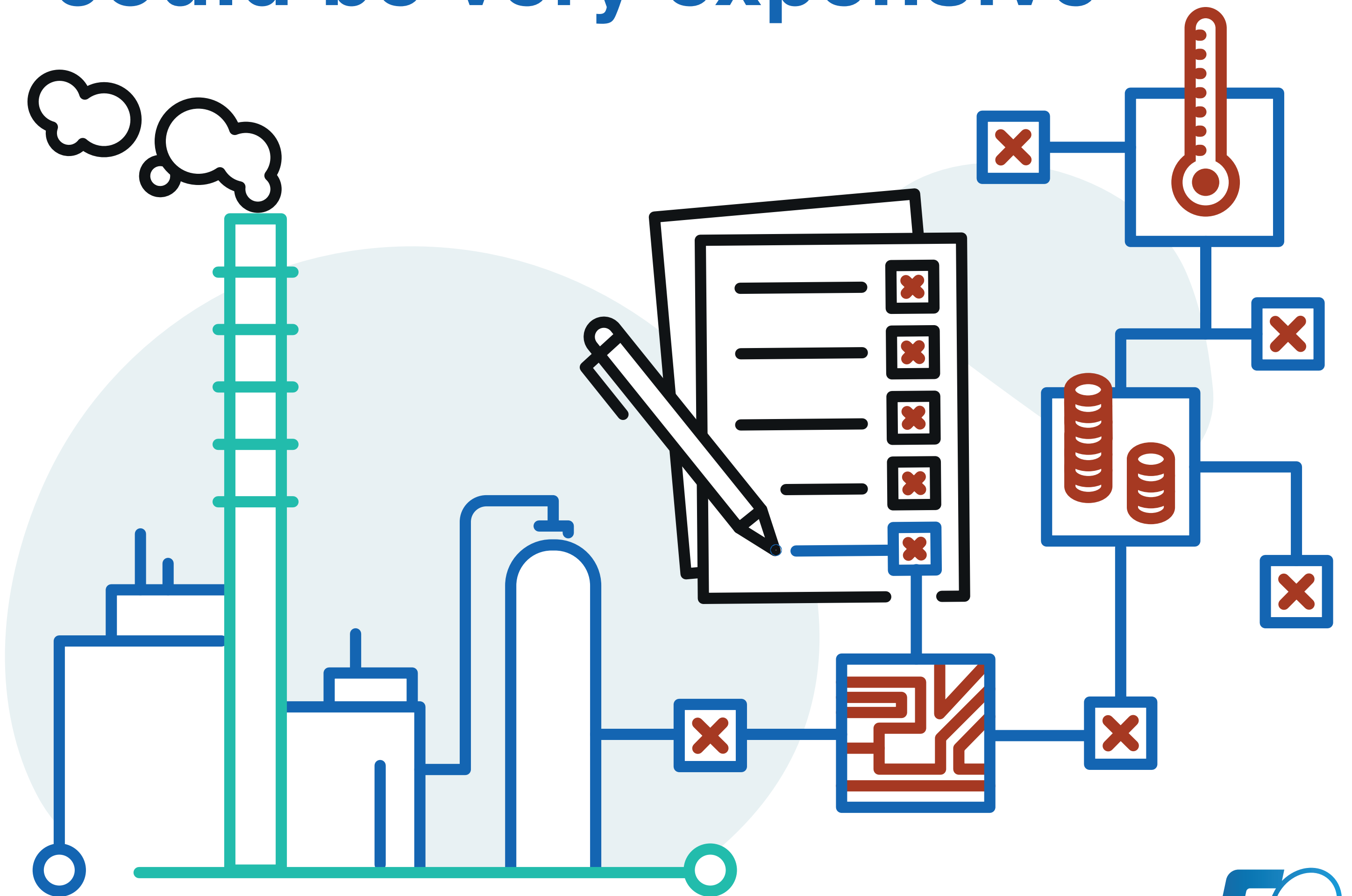


# 5 Essential criteria

for choosing between **in situ** or **extractive** gas analysis

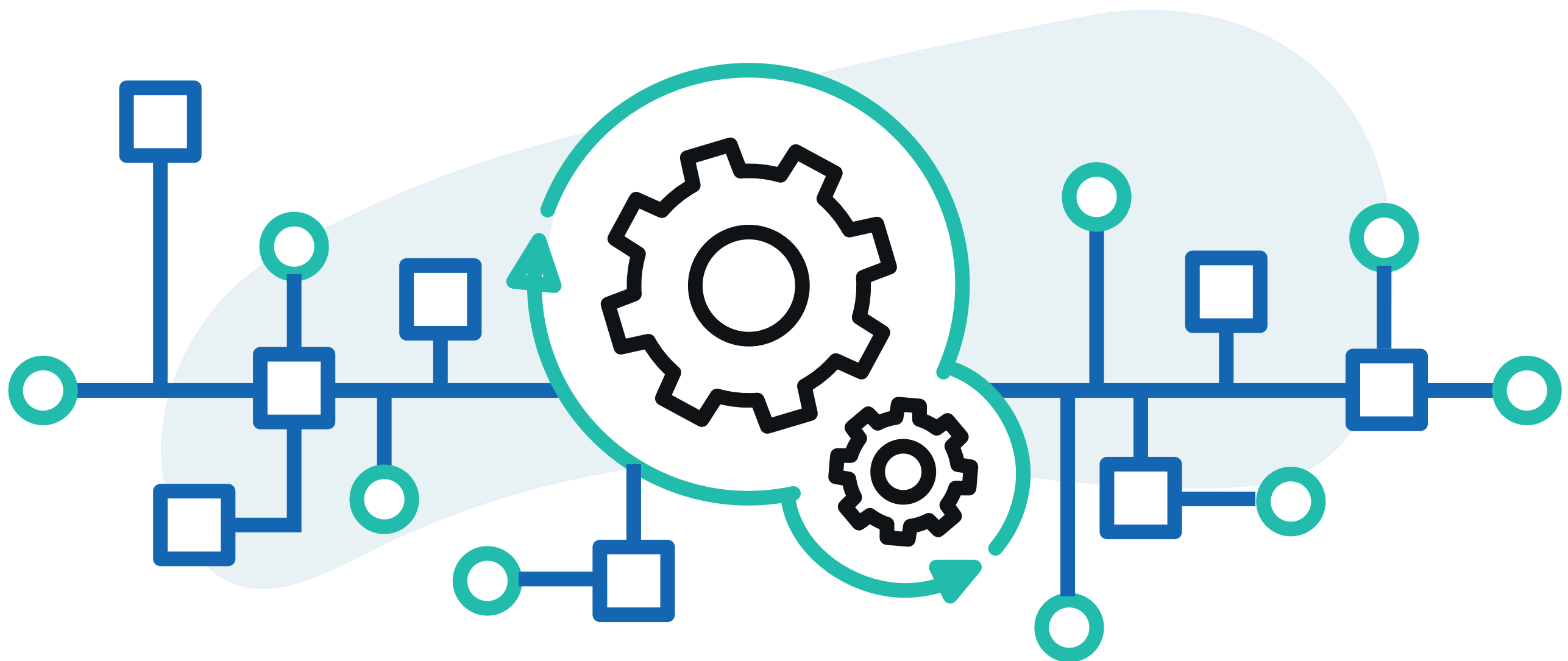


# Neglecting — a single criterion could be very expensive

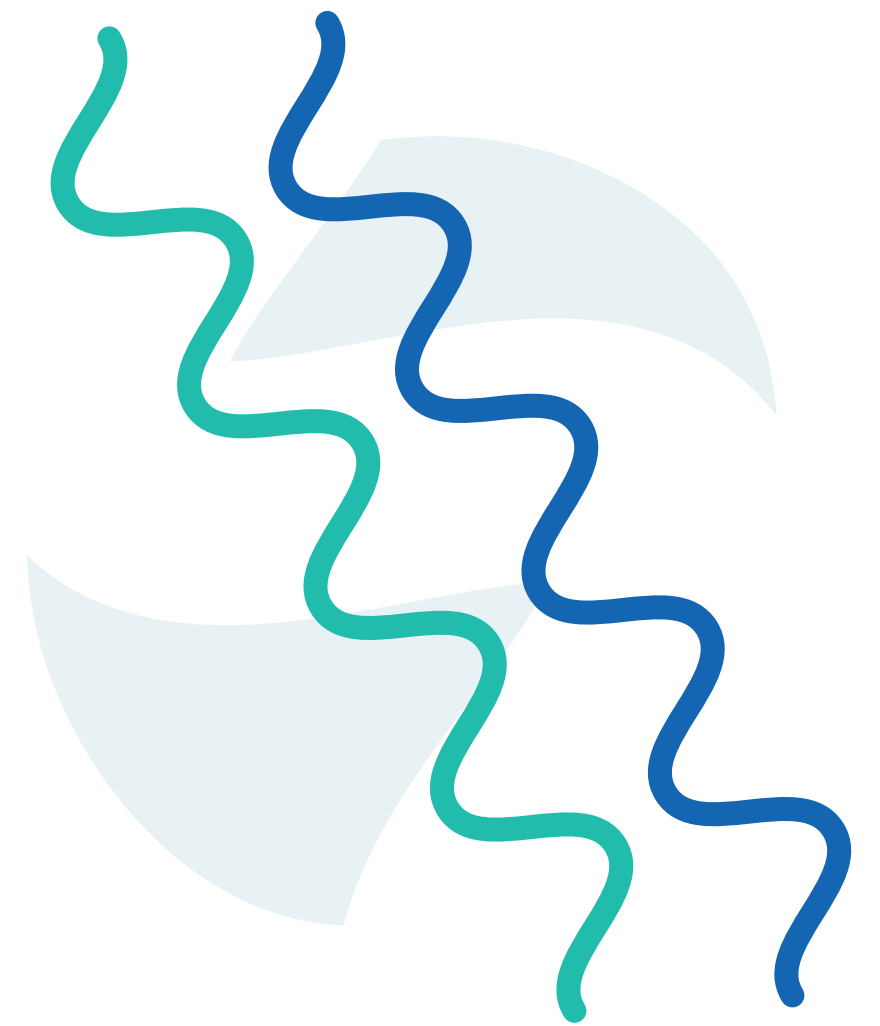
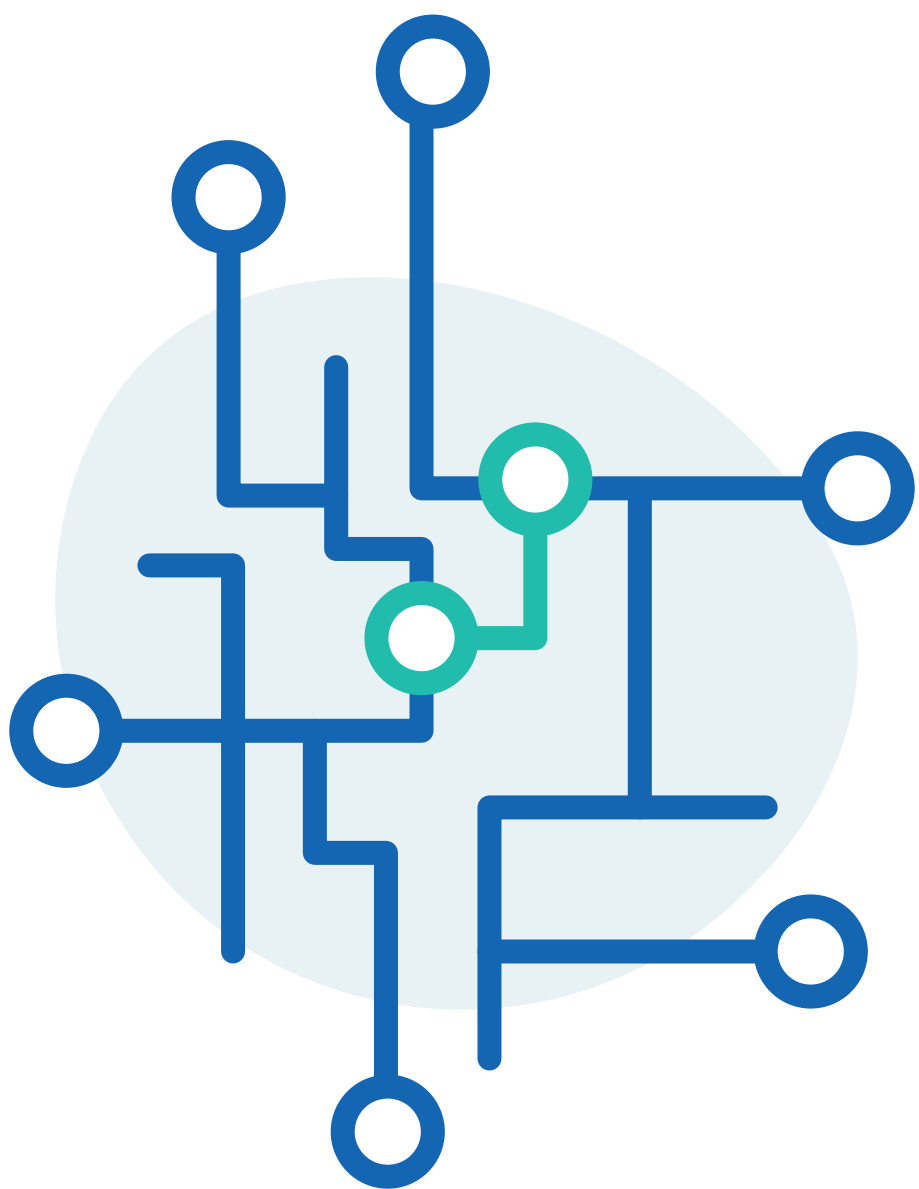


# Criterion **N°1**

## Installation **conditions**



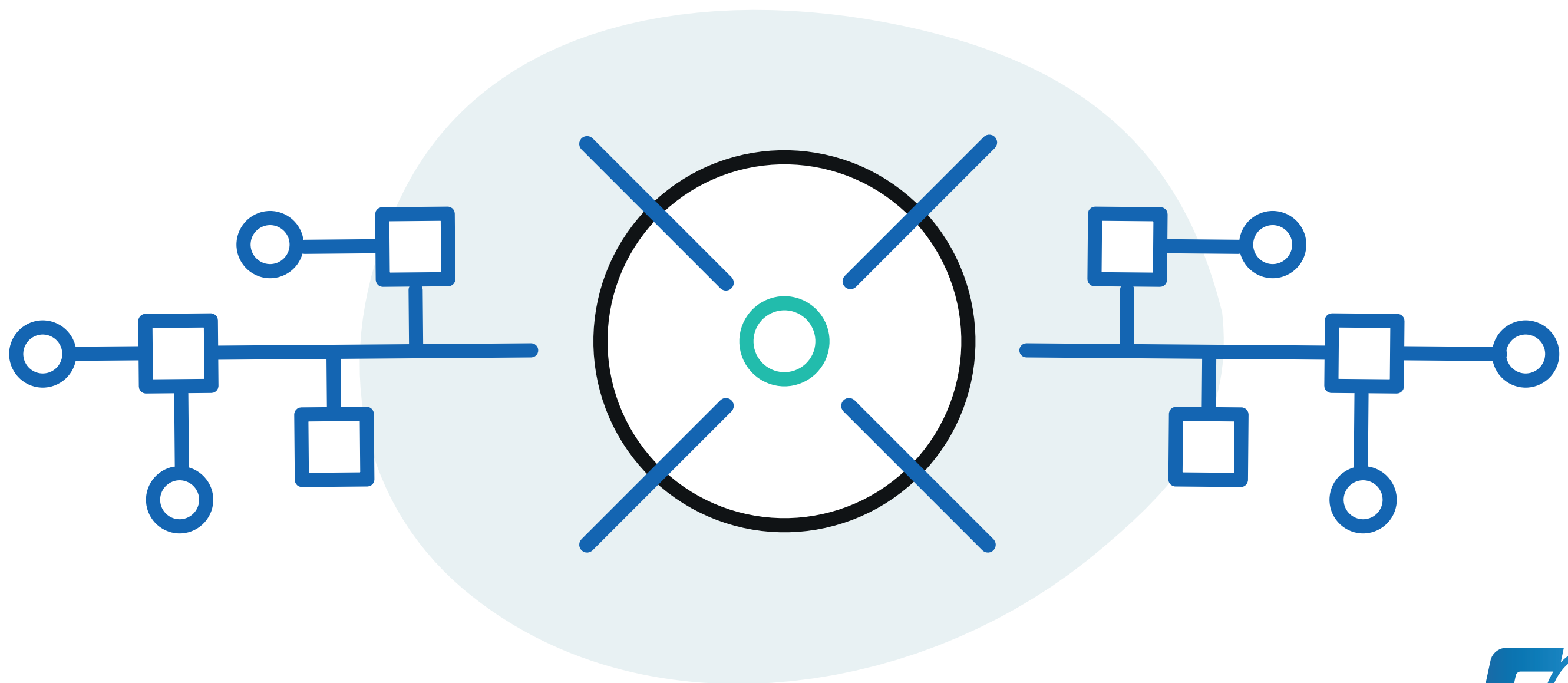
- **Accessibility of equipment**
- **Temperature, humidity, corrosivity**
- **Vibrations, rigidity of the supports**



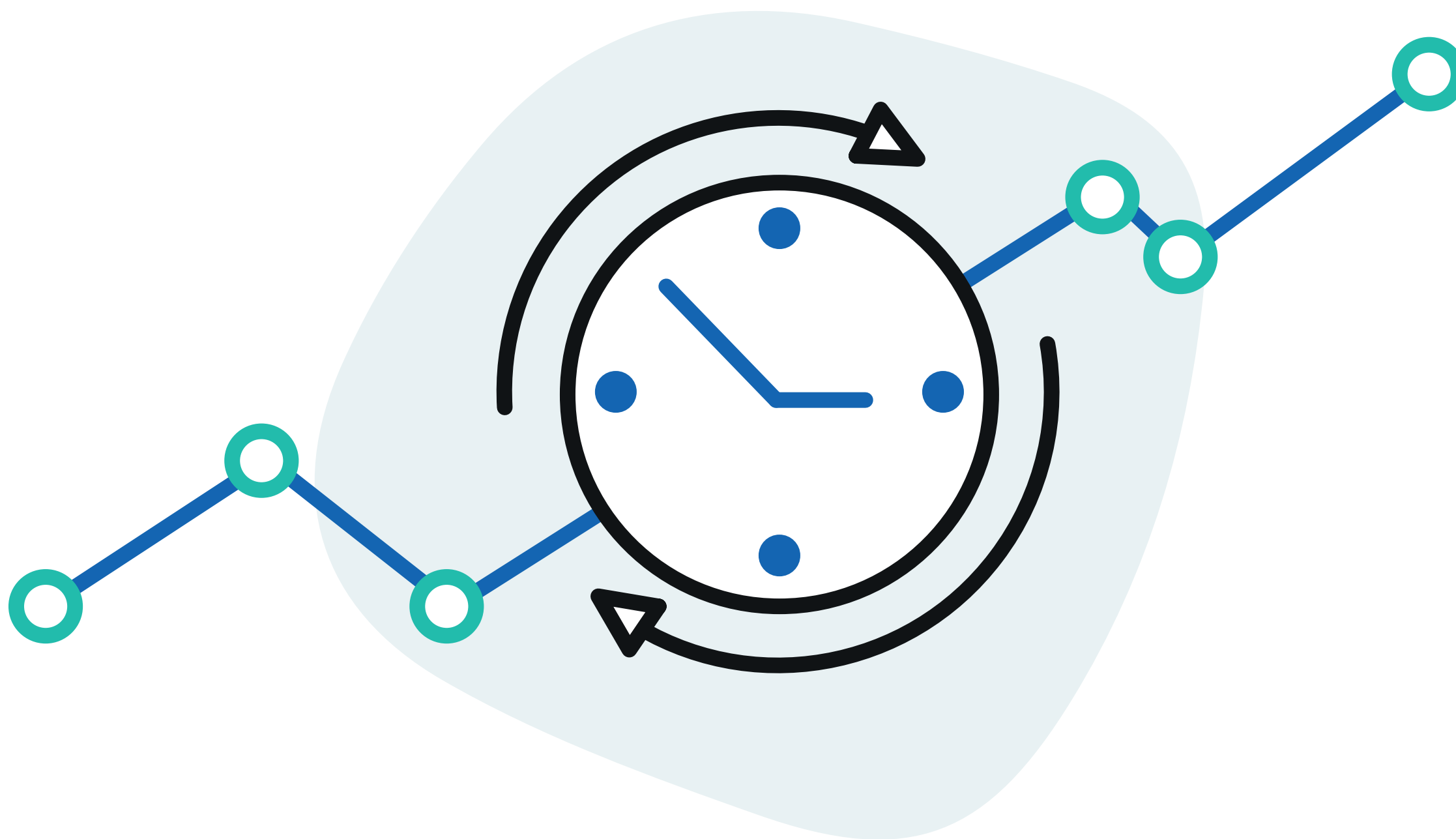
Criterion

N°2

The required performances



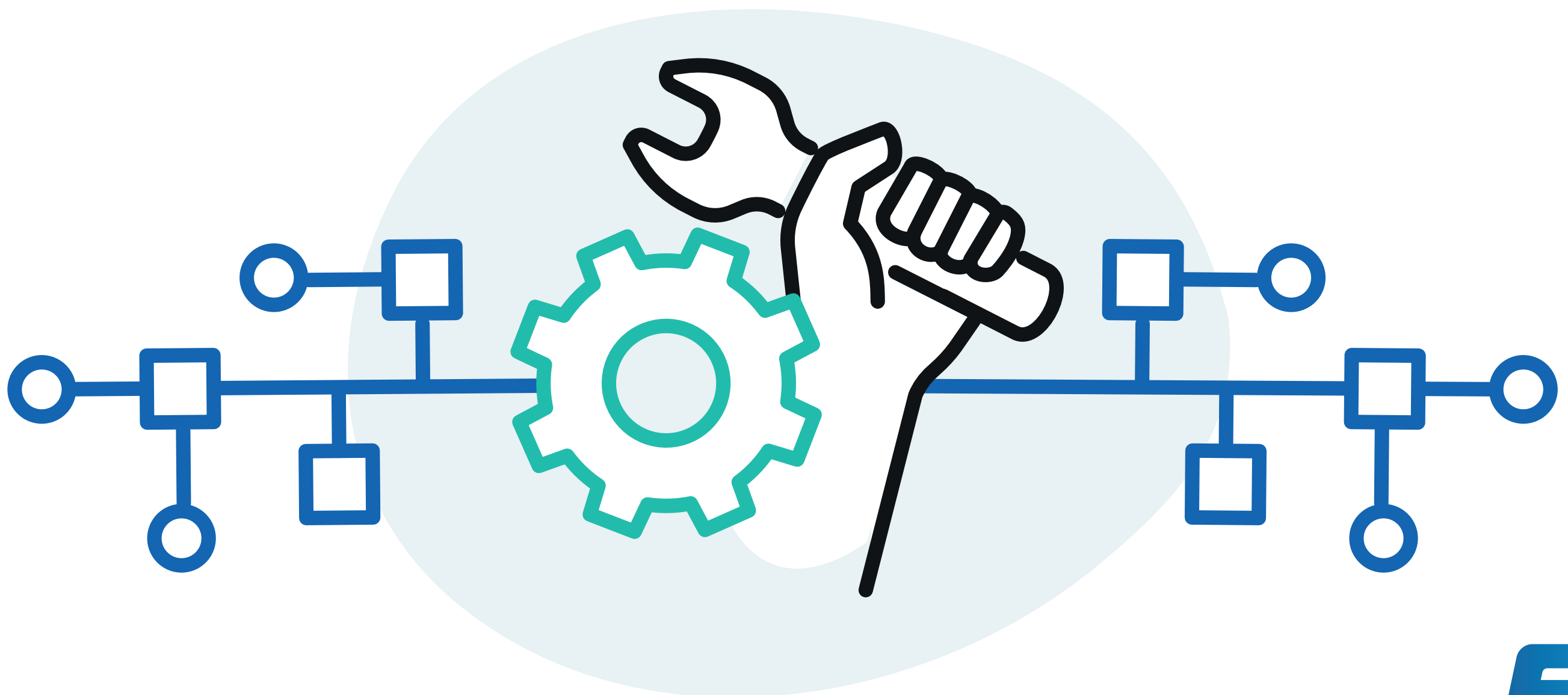
- Accuracy
- Response time
- Cross interference
- Influence of temperature



Criterion

N°3

**Maintenance and calibration**



# Frequency and duration of operations



**Skills and tools required**



Criterion

Nº 4

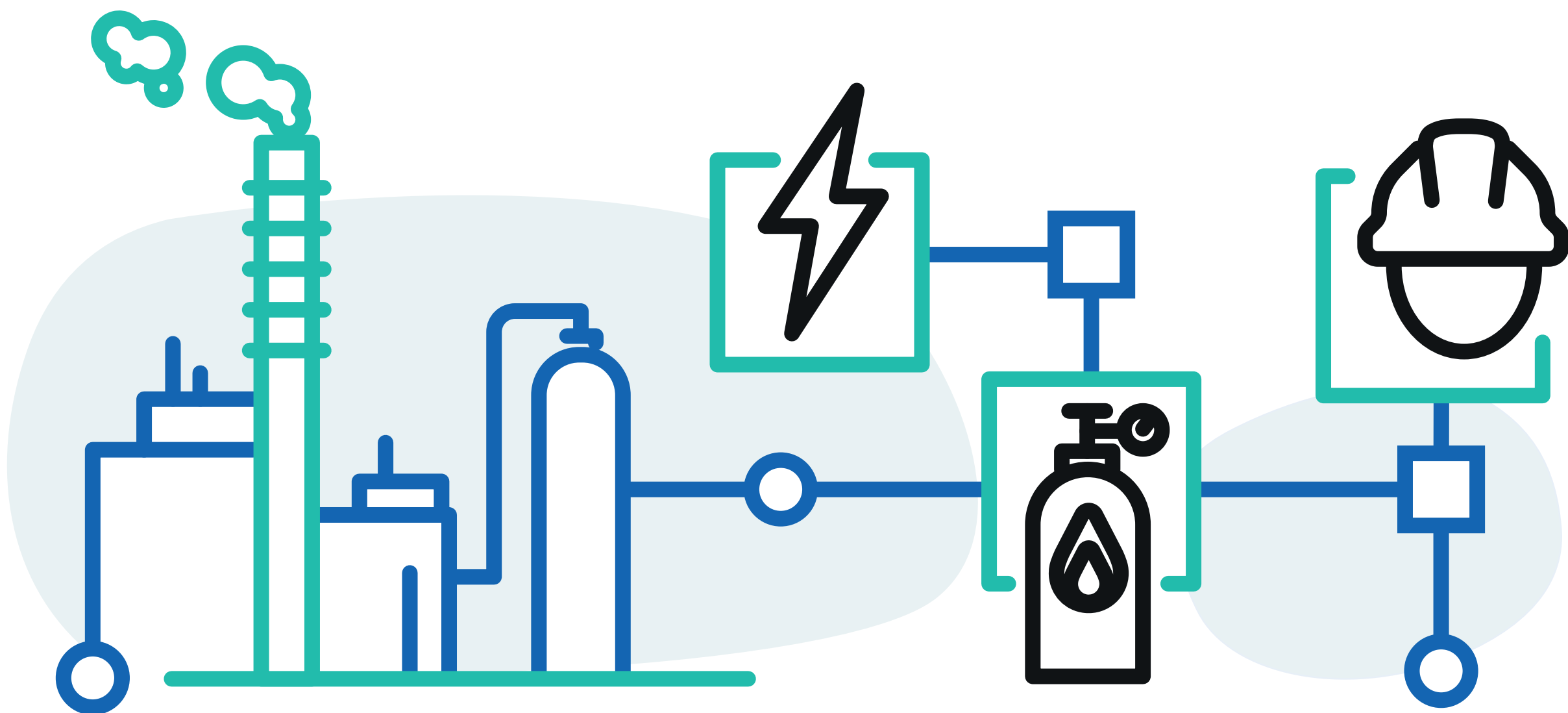
The total cost



# The purchase cost



# The operating costs

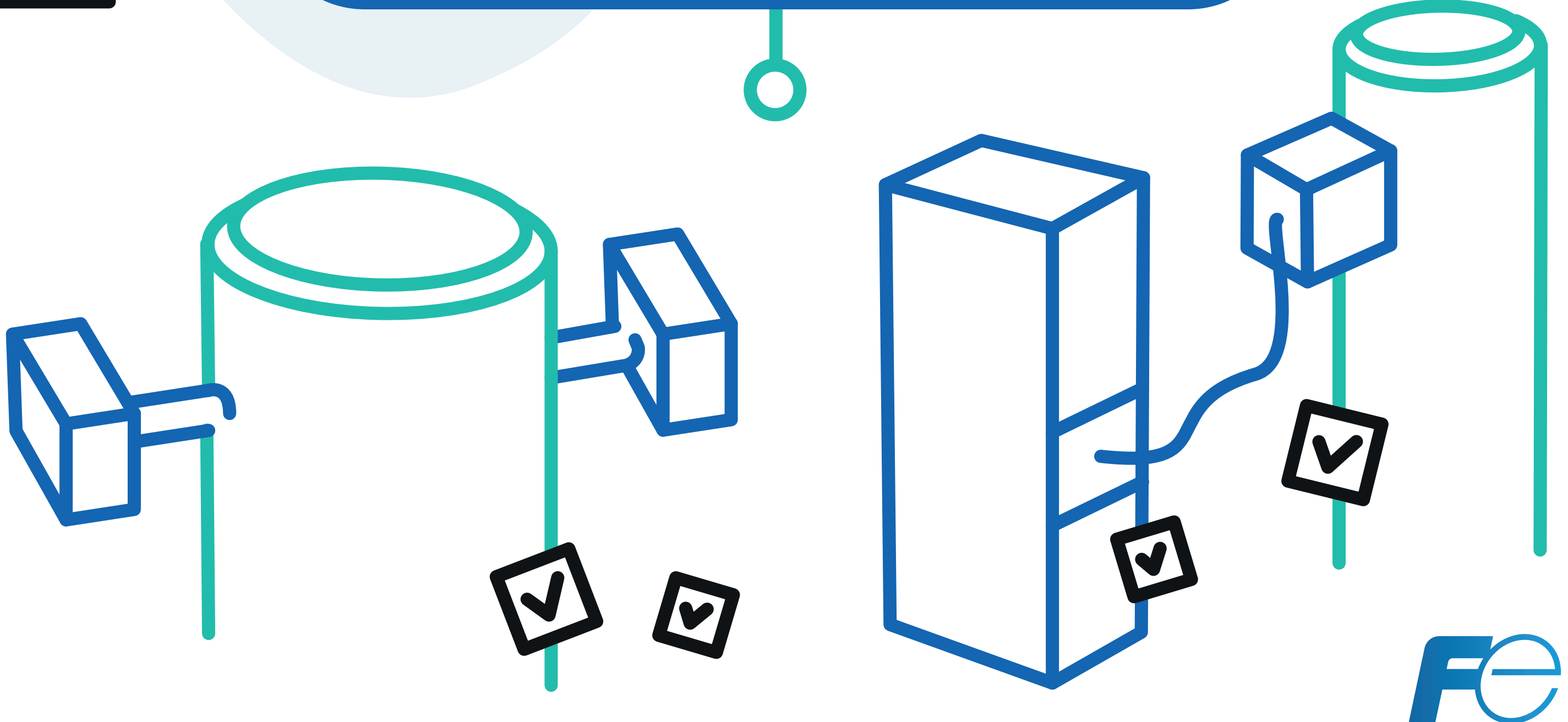
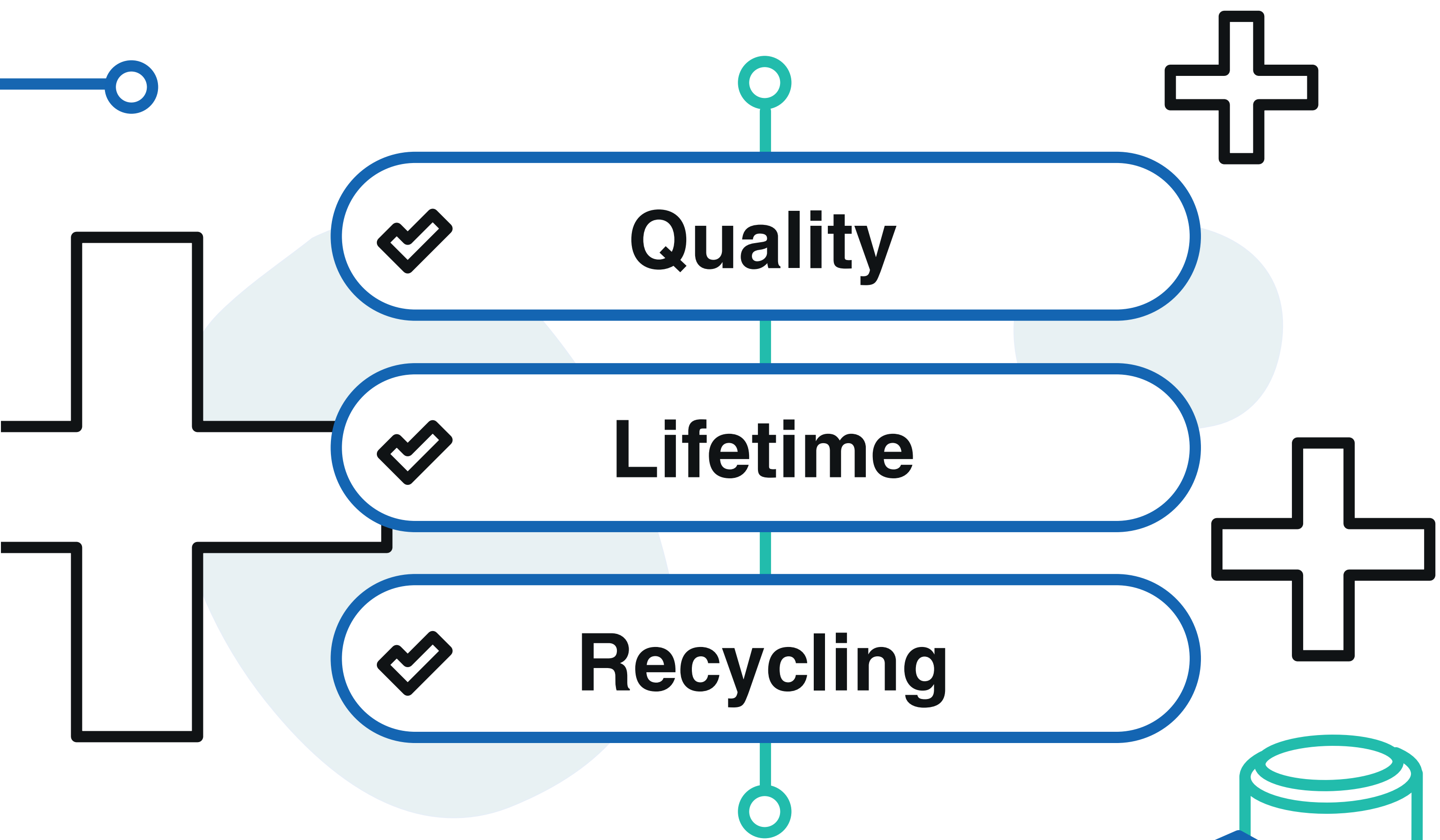


Criterion

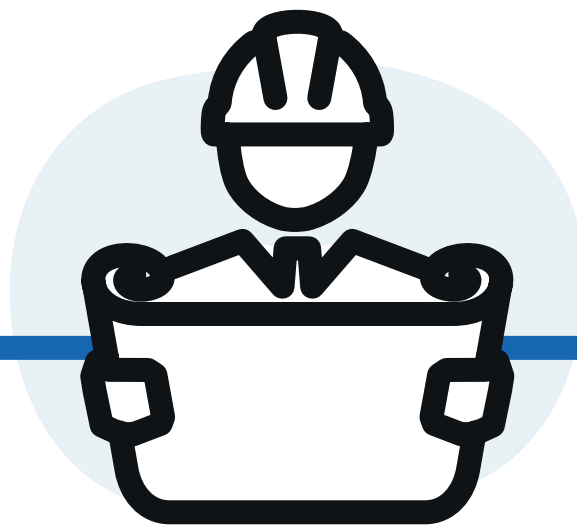
Nº 5

The life cycle





**Fuji Electric**  
has been



**advising and  
deploying**



**in situ and extractive  
gas analysis since 1954**



# Let's choose together



the most suitable **solution** for  
your **industrial process**



[www.fujielectric.fr](http://www.fujielectric.fr)

